

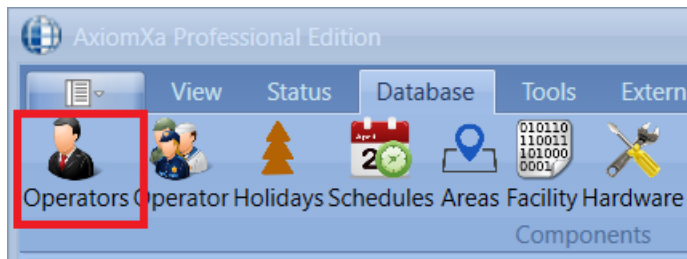
Technical Guide TGAX6

Adding an Operator to Axiom X

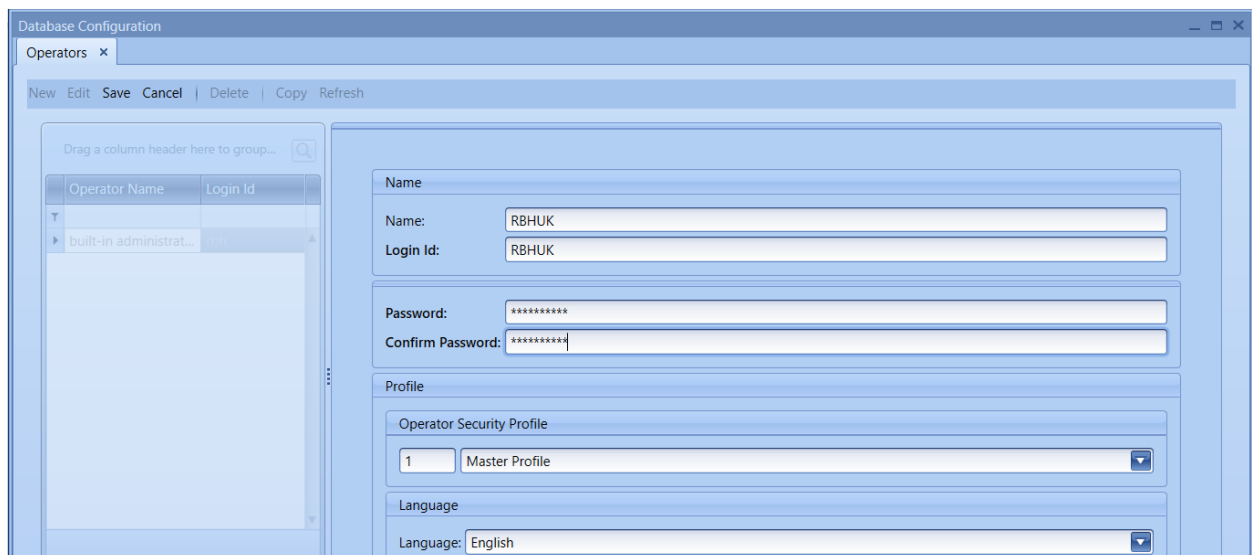
Operators are made up of 2 components – The **Operator** itself, which consists of a Login and a Password, and the **Operator Security Profile**. The **Operator Security Profile** determines what you can see, edit and access.

Creating an Operator

- Log into Axiom X and select **Database**, then **Operators**;



- Select **New**, then fill in the fields with your **Operator Name**, **Login ID**, **Password** and then confirm your password. When done, select **Save**. Test by logging out of Axiom V, then back in with these new credentials. (Note the **Operator Security Profile** field in the middle of the screen. We will be coming back to this later.)



Operator Name	Login Id
built-in administrat...	

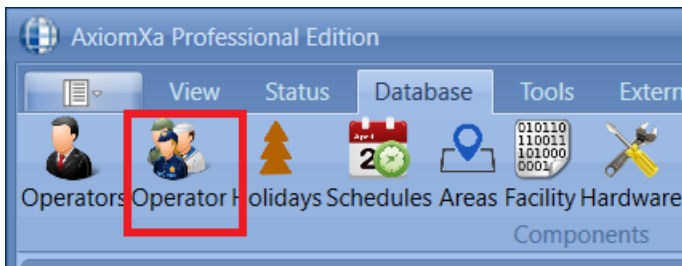
Name: RBHUK
Login Id: RBHUK
Password: *****
Confirm Password: *****

Operator Security Profile: 1 Master Profile
Language: English

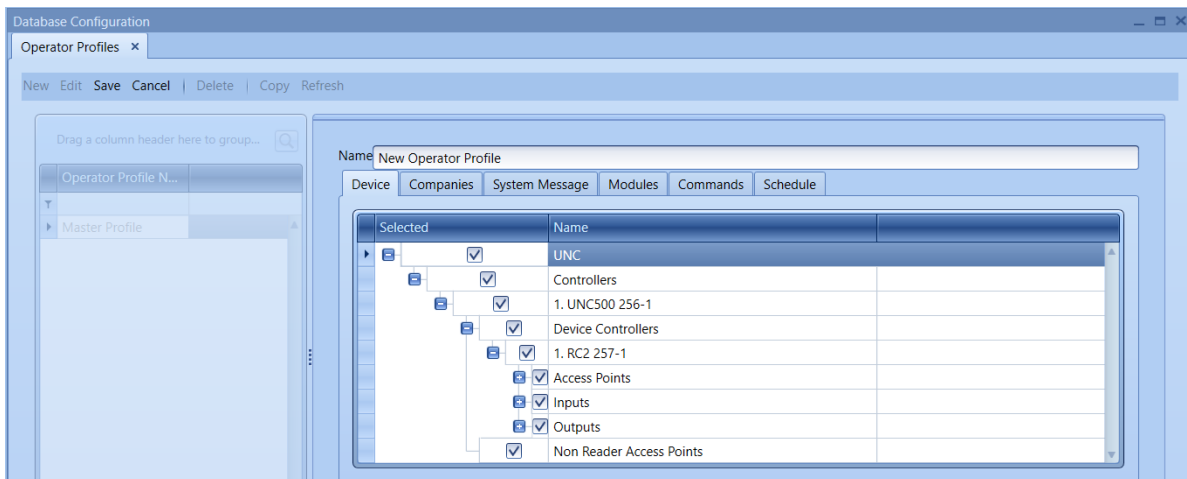
Creating an Operator Security Profile

- Go to **Database** then **Operator Security Profile**. Select **New** to create a new Profile or **Edit** to make changes to an existing Operator Security Profile.

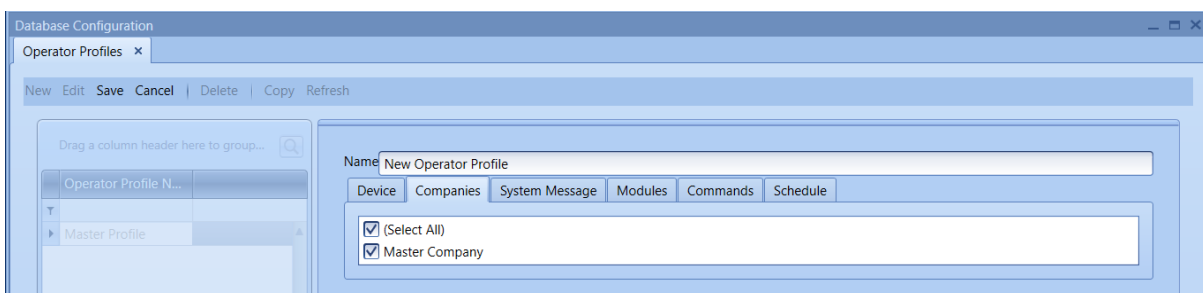
Please note, you cannot make changes to the **Master Profile**.



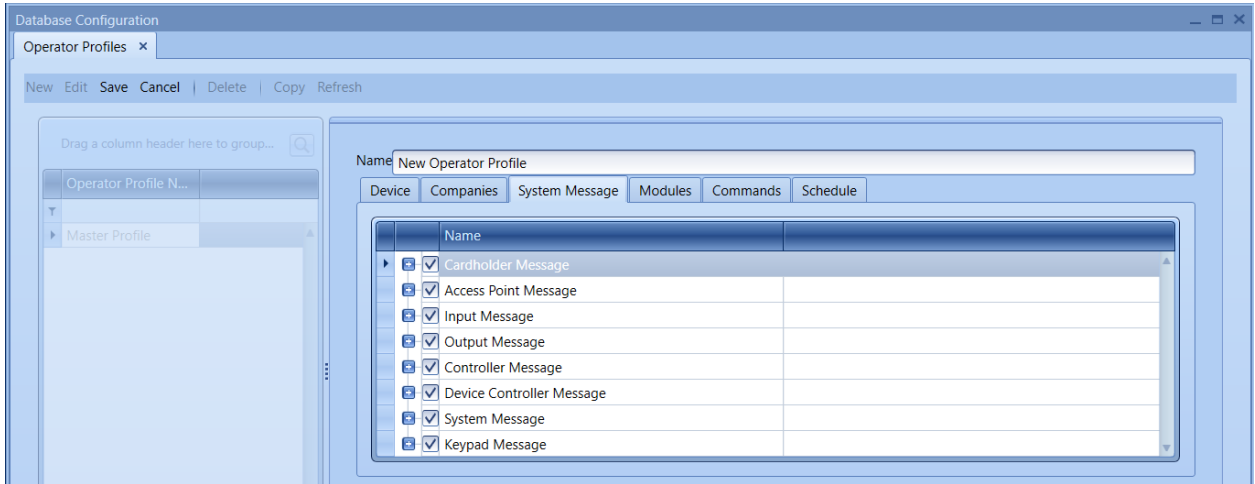
- From the *Devices* tab, the Operator can be restricted in which device they can see and interact with in the system. The operator can be restricted by networks, panel, access points, or even inputs and outputs. Only items that are selected here will be available to the operator.



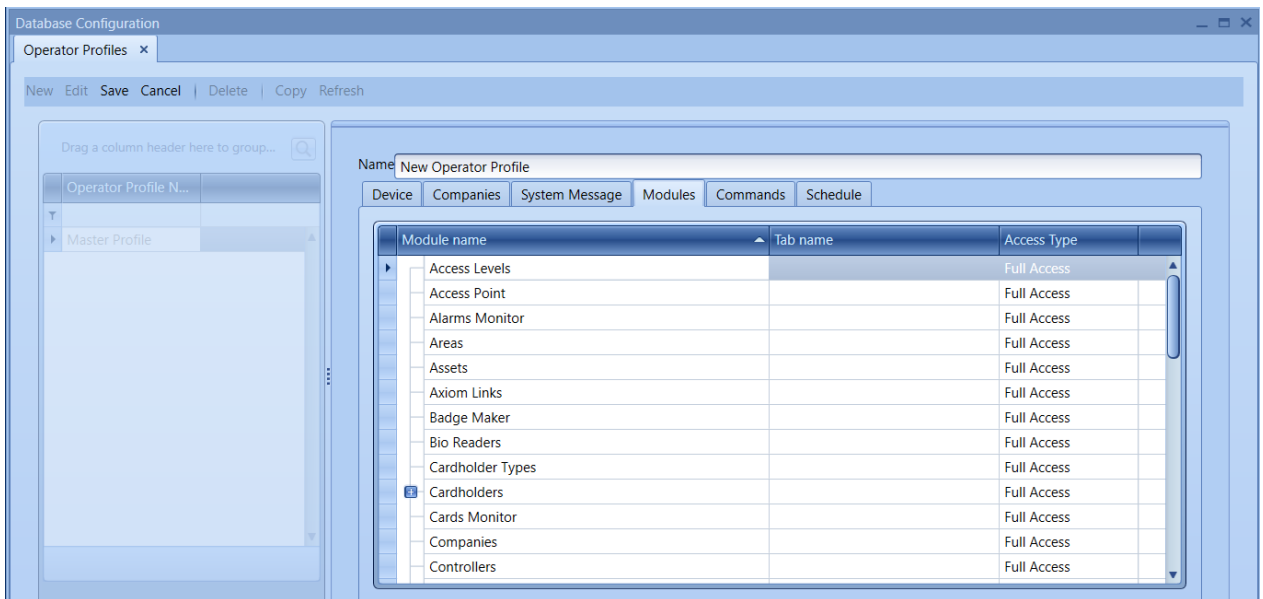
- From the *Companies* tab, it is possible to restrict access to different companies. On multi tenanted site For example you can allocate cardholders to a company and by selecting that company in the operator profile when the operator logs in they will only see cards for their part of the site/building. (See TGAX4 for adding companies to the system)



- The Messages tab not only allows the restriction of messages the operator can see, but also provides the ability to play a .wav file when the message appears. The sound can help alert the operator when certain events happen.



- From the Modules tab, the Operators' access to the software can be restricted. They can be given No Access, View Only, or Full Access to sections of the software.



- From the Commands tab, the operator can be restricted to perform only certain commands.

