

Technical Guide TGAL20

Installing Software Updates

NOTE: Your Integra32 software should be closed during this upgrade.

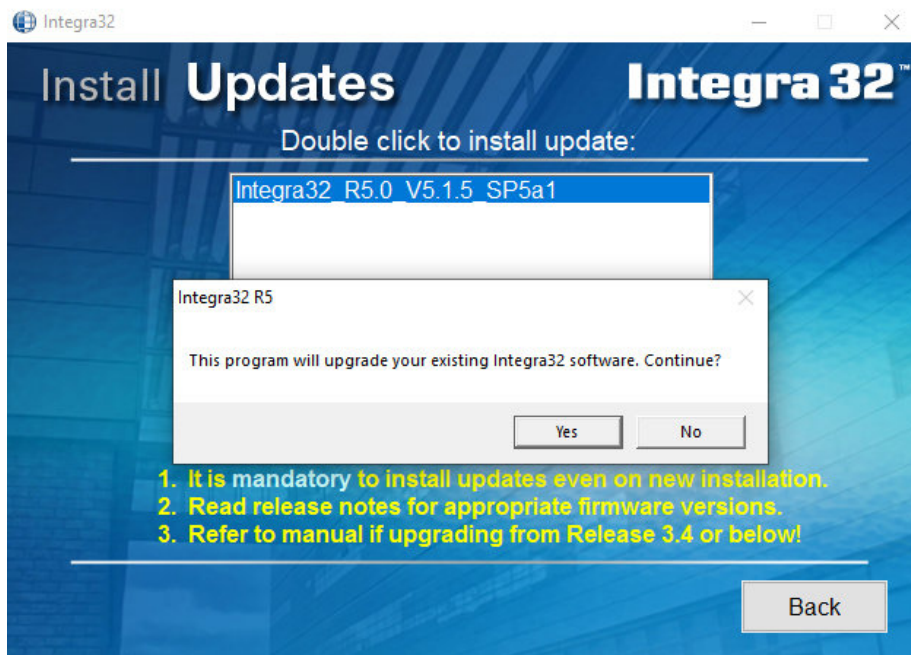
From the Integra disc, launch setup. Ensure the chosen language is what you require and click next. Alternatively, if you have been sent a Service Pack from our Tech Team, simply double click the Link and skip to page 2



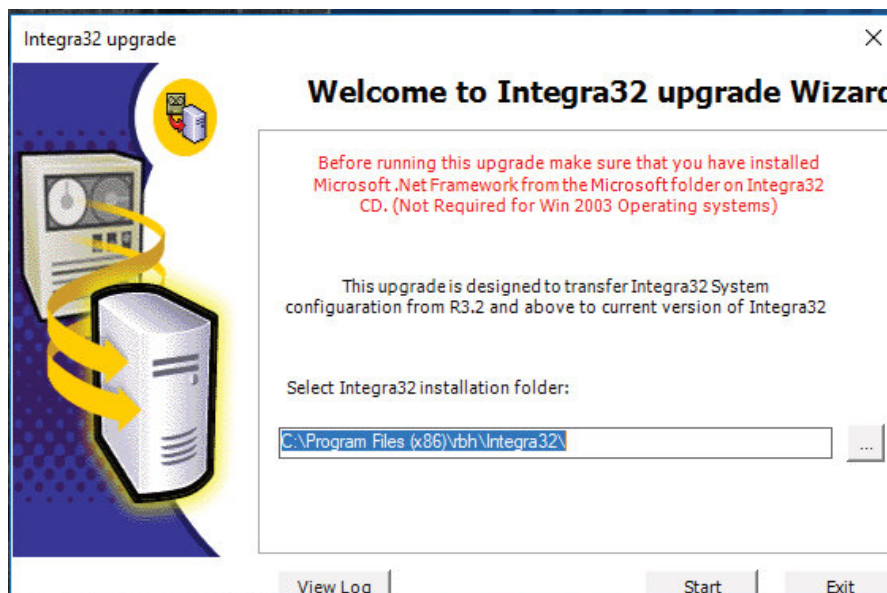
Select the 4th option, 'Install Software Updates'.



You will then be given an update screen. Double click the 'Integra32_R5.0 V5.x.x' link. You will see the following pop-up. (Version may vary or be newer)



Click Yes, and a Wizard window will open. Click next, agree to the terms and conditions and continue until the following screen pops up.



Ensure the pathway is pointing to the Integra32 folder. It should look something like below then click Start.

'C:\Program Files (x86)\rbh\Integra32'

Tip: This is PC specific, so if you have the installation folder somewhere else, please ensure you have the correct address in the box above.

Once this has completed, you will see a pop up saying that the upgrade has been successful. You will then be able to re-open your Integra32 software.

