



# RBH Technical Bulletin

2 Automatic Road, Suite 108  
Brampton, Ontario  
Canada L6S 6K8

---

## Integra 32™

**Number: 60**

**Integra 32™ Web Client**

---

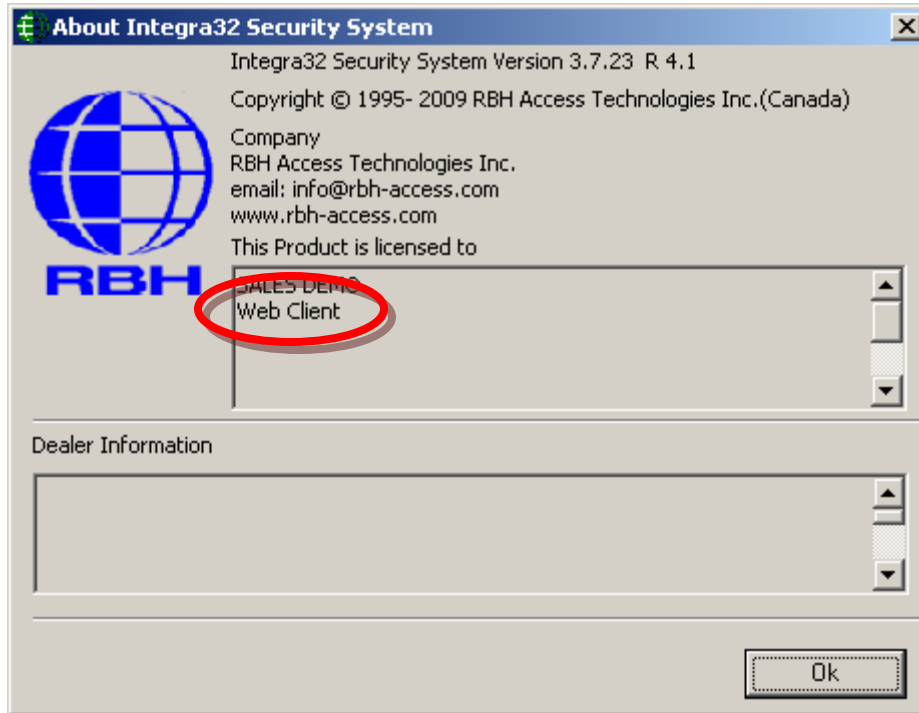
### Integra32™ Web Client web application

Integra Client is developed on Visual Studio 2008/VISTA.

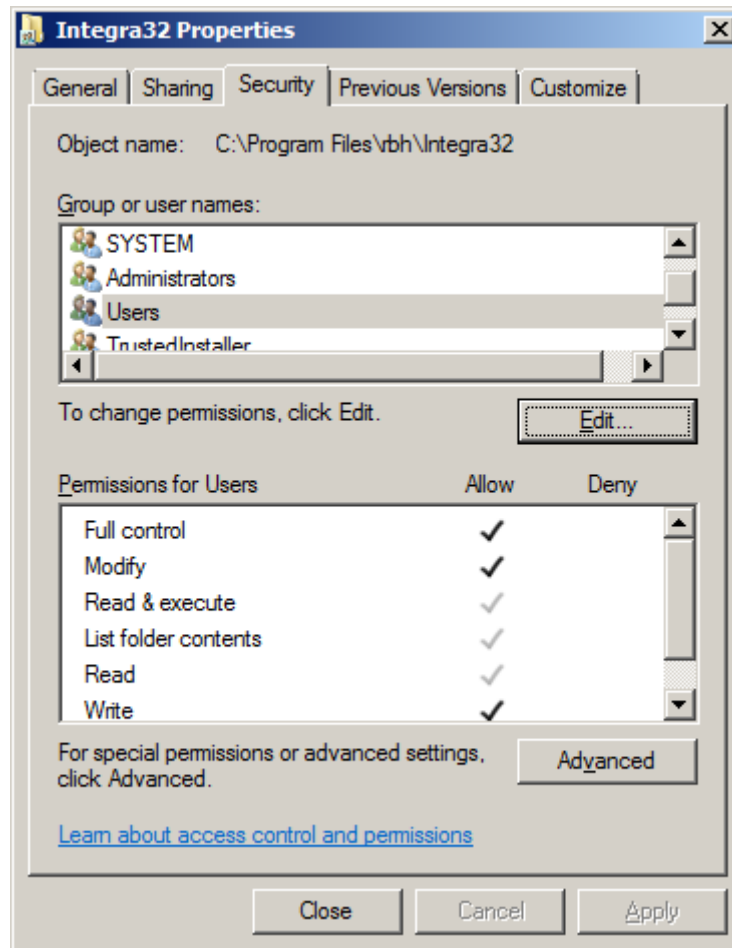
#### 1) Pre-requisite:

- a) In order for Integra32™ Web Client to work properly it should be installed in a machine that has one of the following OS installed:
  - i) Windows XP SP2 Professional.
  - ii) Windows 2003 server.
  - iii) Vista Business or better (Home Editions are not supported).
  
- b) Integra32™ must be updated to at least Service Pack 4C (Version 3.7.23+) for the Web Client to work properly.

- c) Integra32™ must be registered with an appropriate license file to enable Web services:



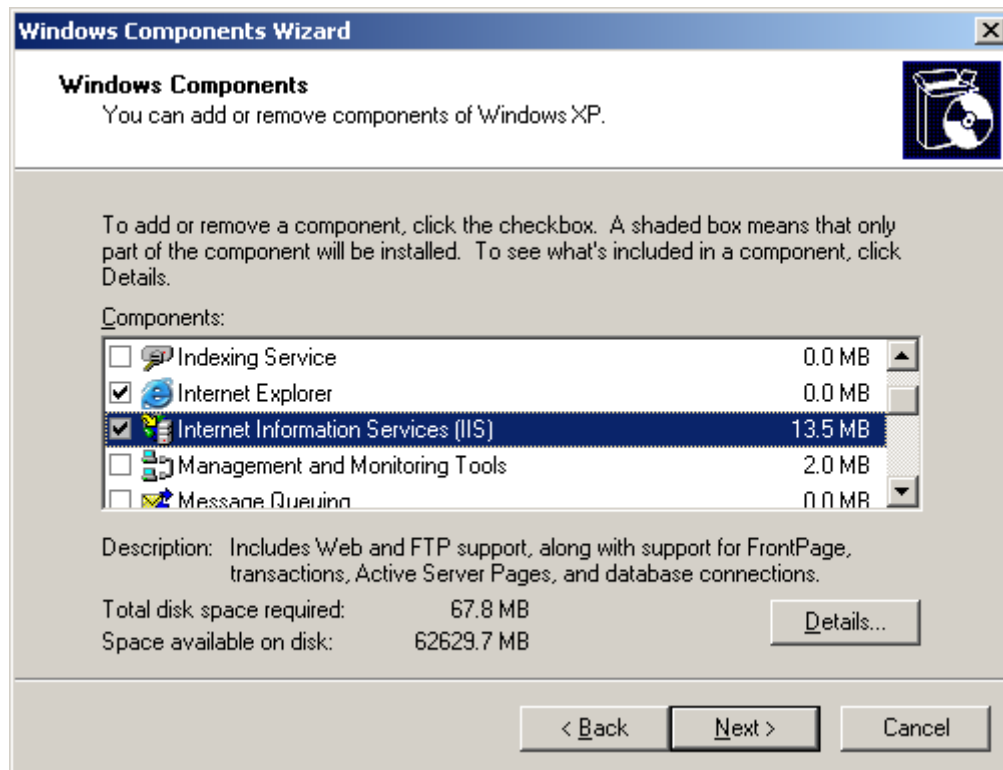
d) Share Integra32 folder:



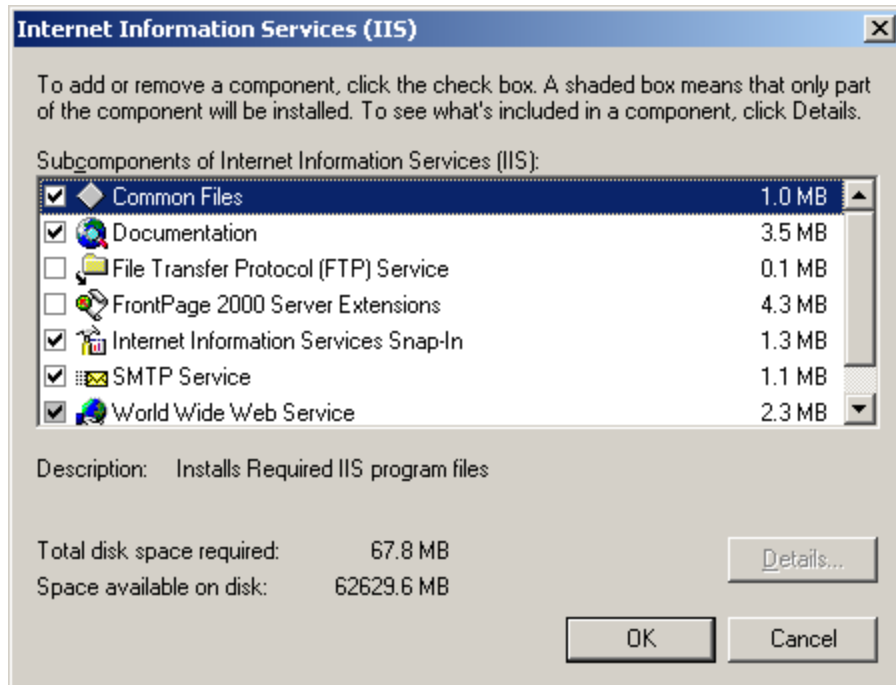
- e) NET Framework 3.5 is required and if it is not detected by the Web Client setup it will be installed.
- f) Internet Information Services (IIS) is also required and if it is not detected the user will be notified. The following instructions will help if IIS needs to be installed.

**i) The steps to install IIS on Windows XP Professional:**

Go to *Start/Control Panel/Add Remove Programs* then select *Add/Remove Windows Components*. Scroll down till you see the IIS.



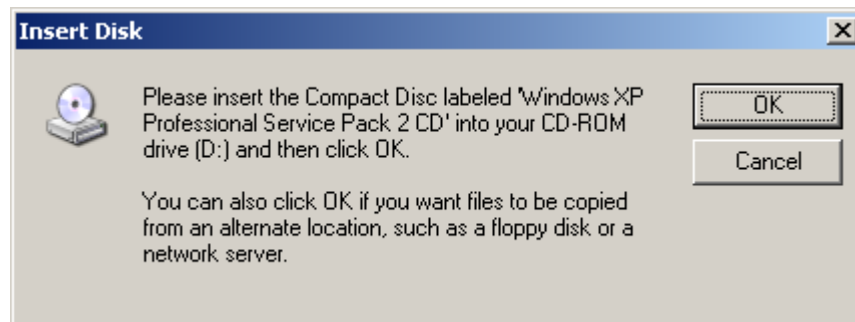
Select the checkbox beside IIS. With the IIS checkbox selected you can go into 'Details...' and see the components installed with IIS.



Confirm the following components are selected and click 'OK' to continue.

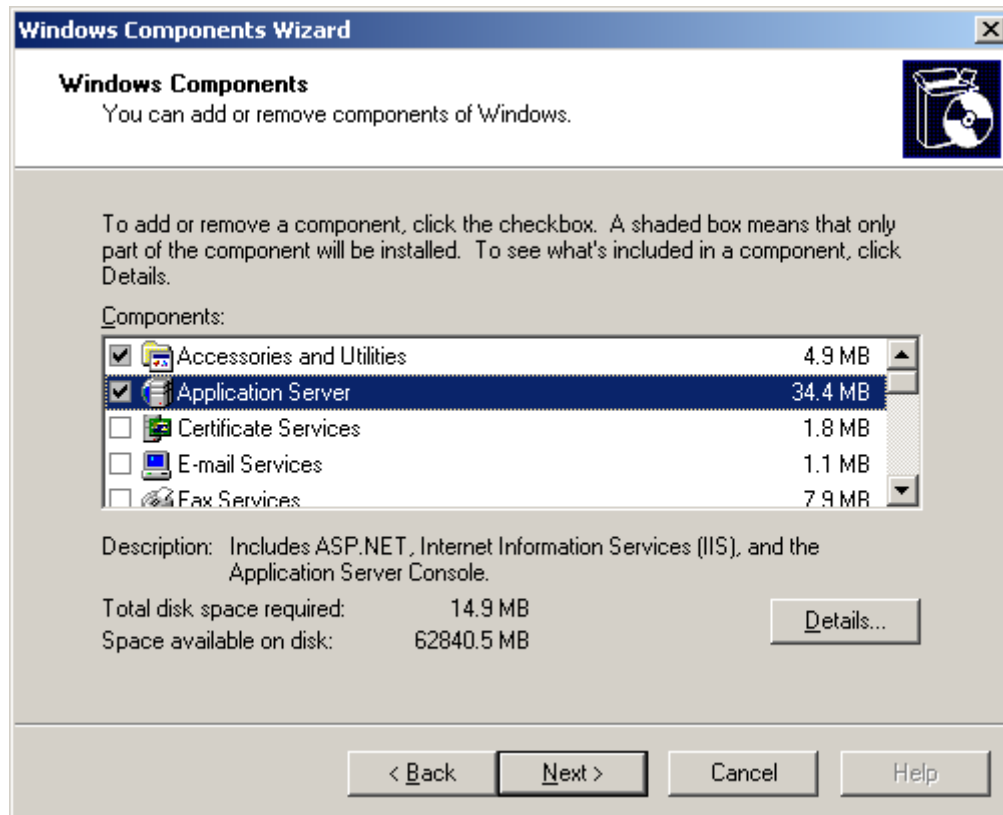
- (1) Common Files
- (2) Internet Information Services Snap-In
- (3) World Wide Web Service

Click 'Next' on the *Windows Component* screen to install IIS (you will likely be required to insert the CD for Windows to copy the files from).

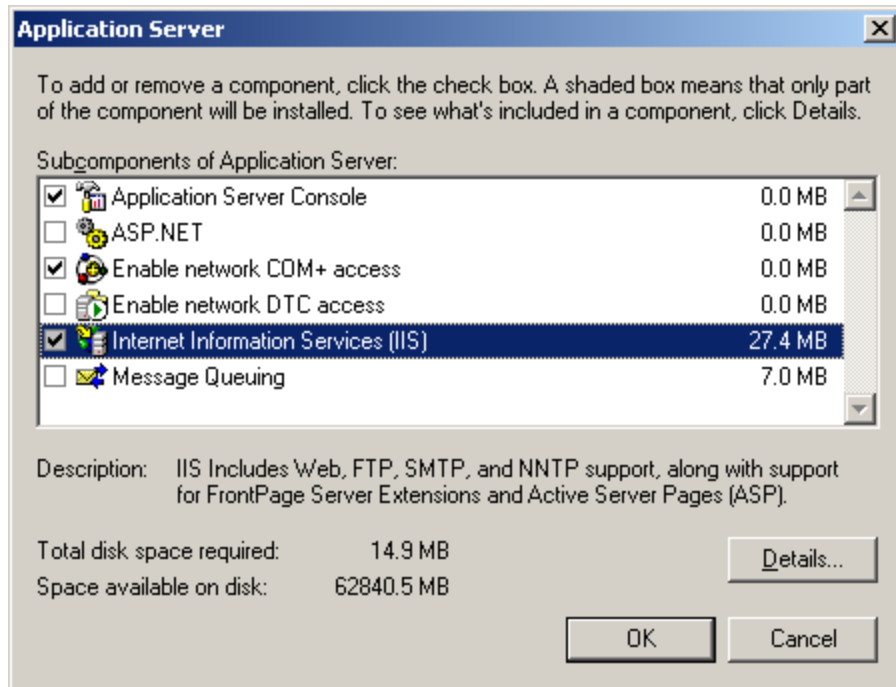


**ii) The steps to install IIS on Windows 2003 server**

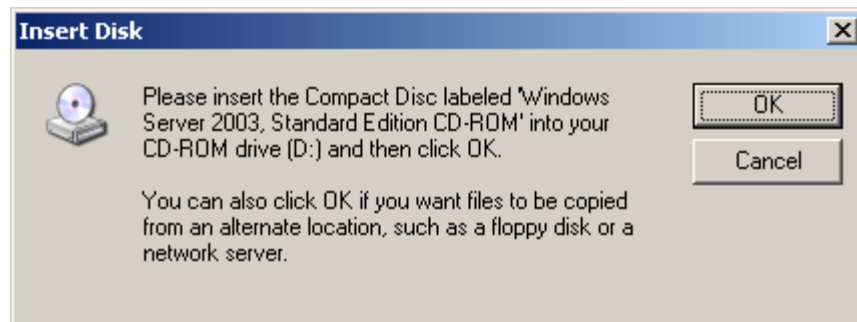
Go to *Start/Control Panel/Administrative Tools/Add Remove Programs/ Add Remove Windows Programs.*



Select *Application Server* and press details. From there select the checkbox beside ASP.NET.

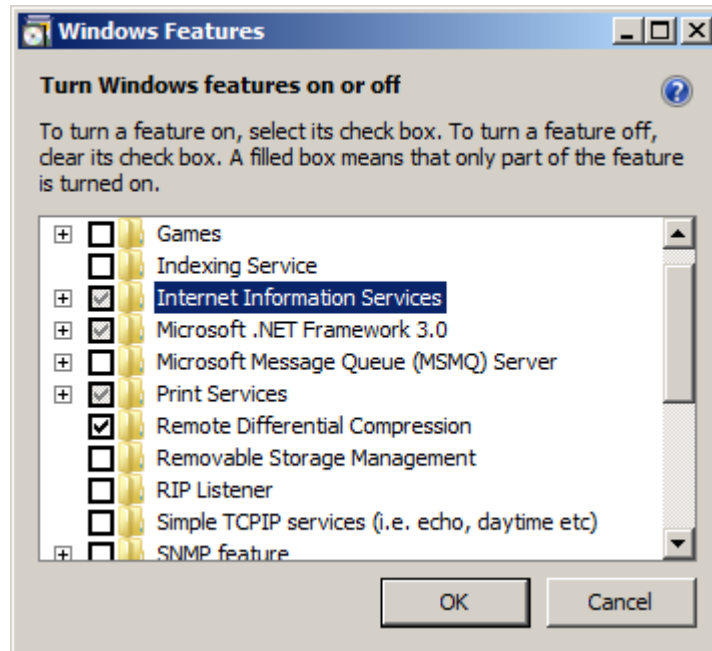


Click 'Next' on the *Configuring Components* screen to install IIS (you will likely be required to insert the CD for Windows to copy the files from).

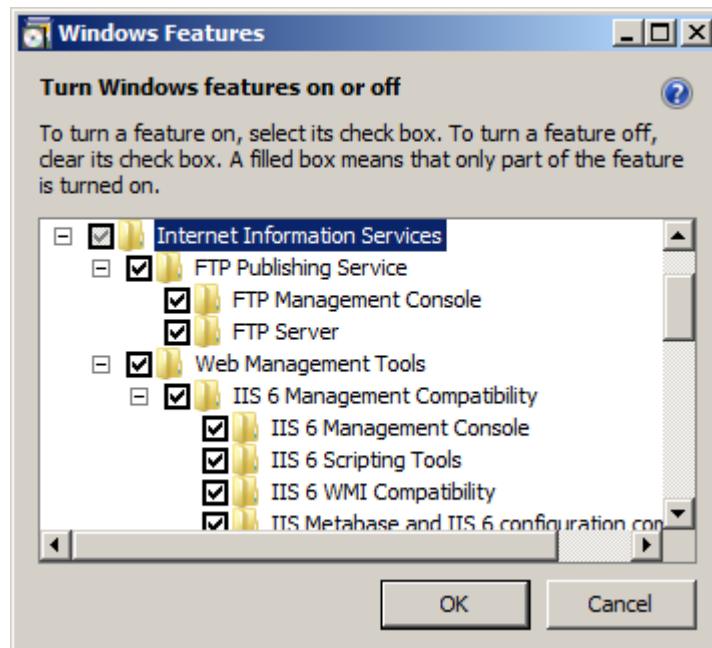


### iii) The steps to install IIS on Windows Vista

Go to *Start/Control Panel/Programs and Features/Turn Windows features on and off*.



Select IIS and click the plus signs to view details. From there select the checkboxes for the desired features and click 'OK'. (You will likely be required to insert the CD for Windows to copy the files from.)



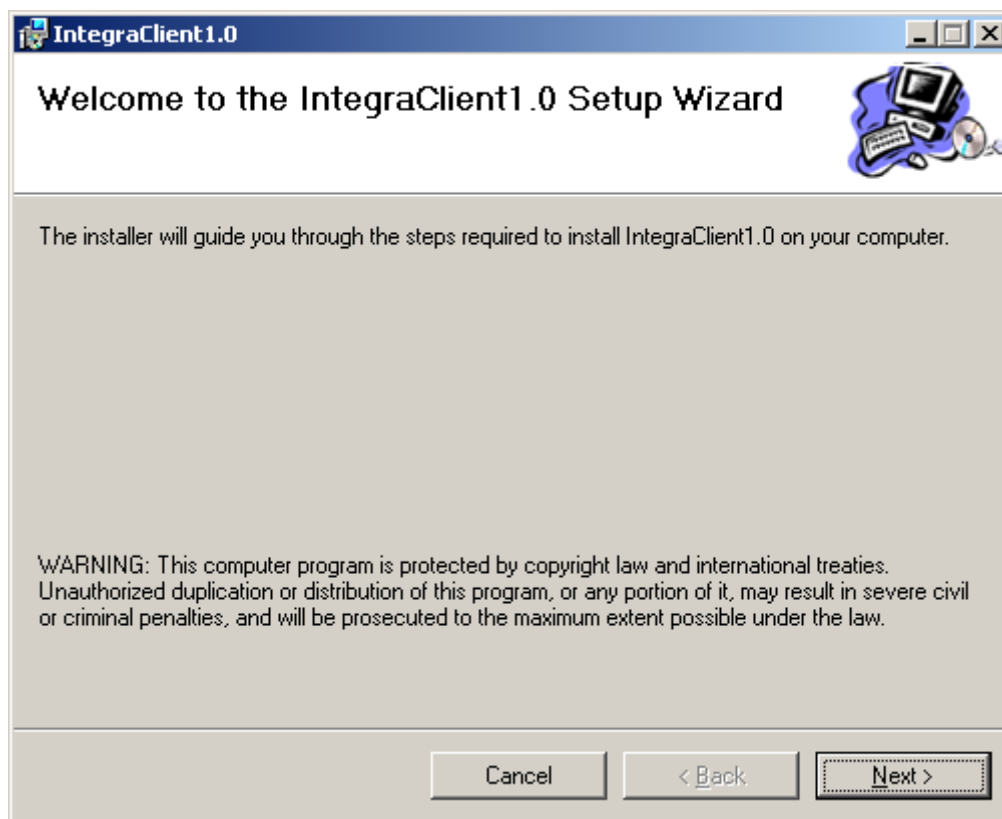


## 2) Installation Package for Integra Client Component

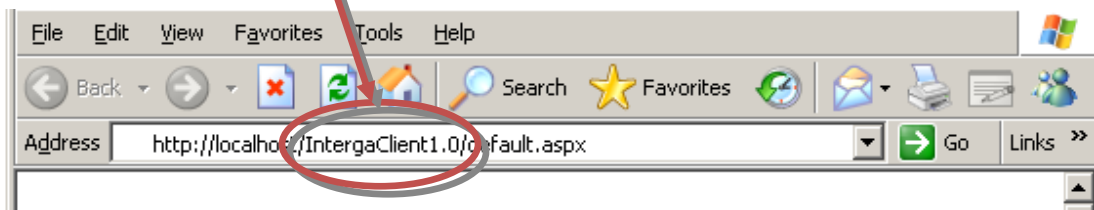
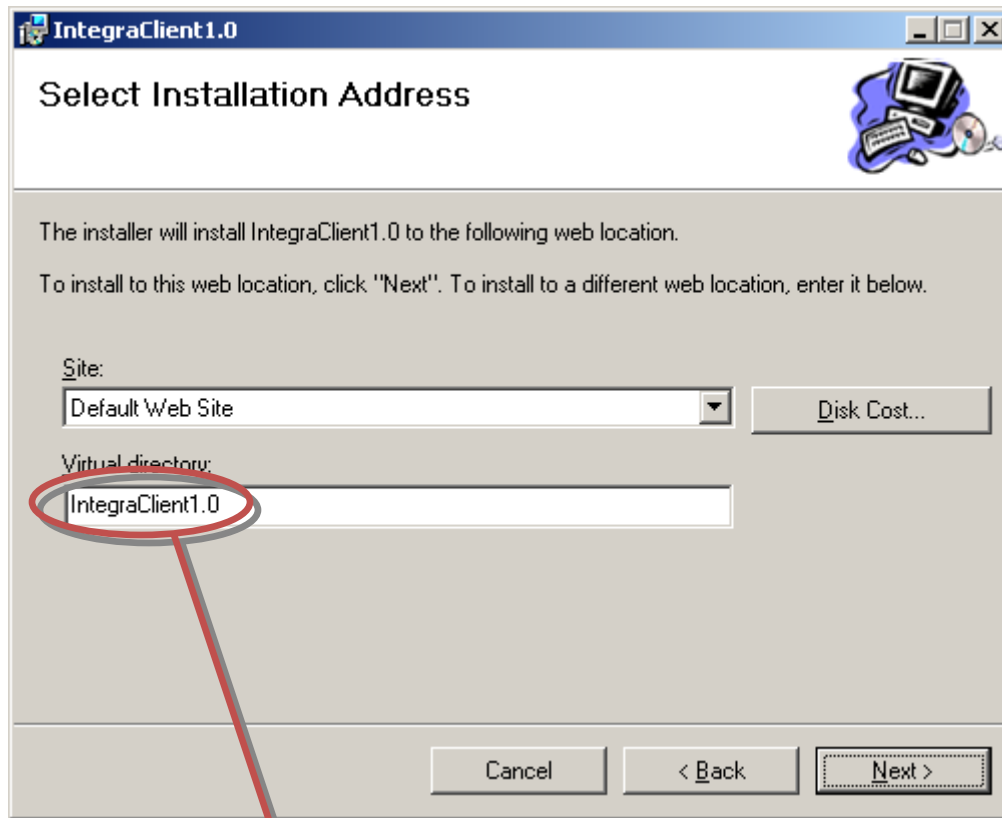
After IIS is installed go to the folder that contains the installation package for Integra Client. (The following example is from WindowsXP™)



Double click on the setup file.

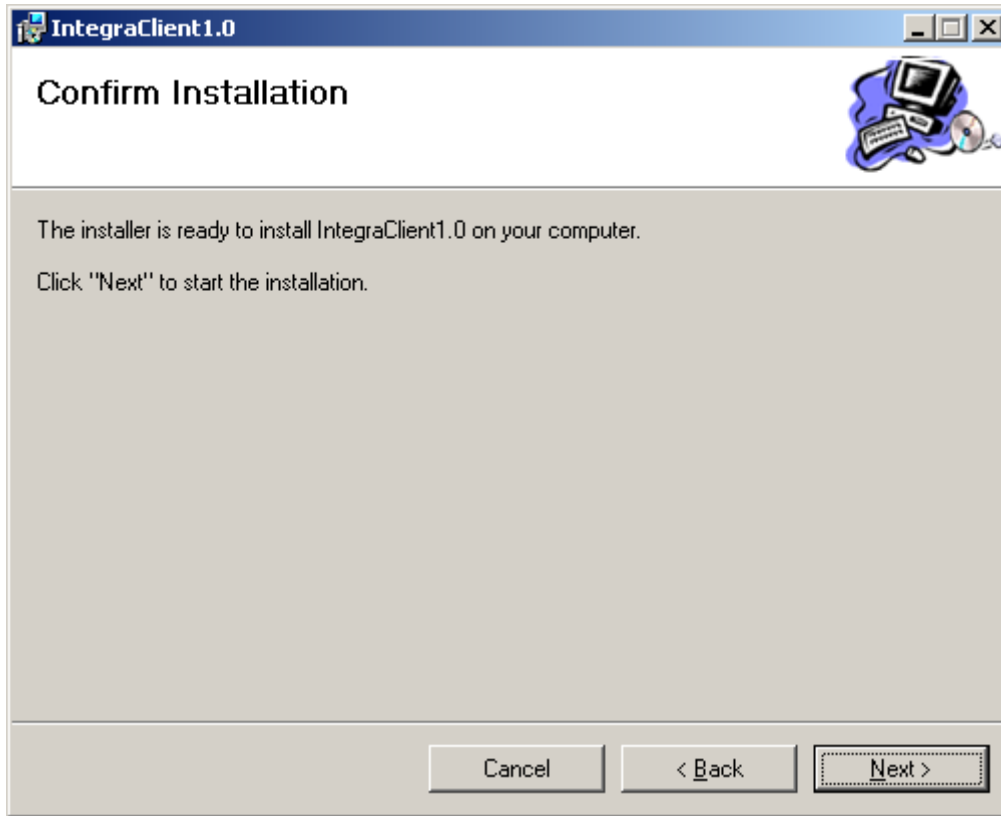


Click 'Next' to continue with installation.

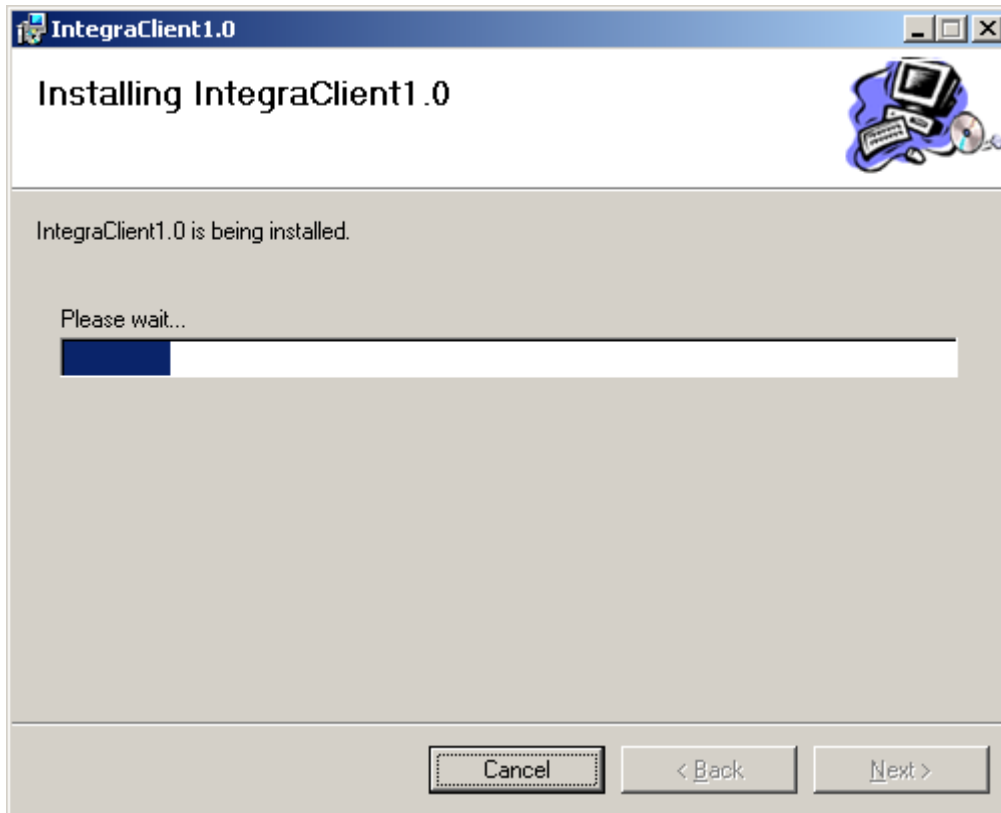


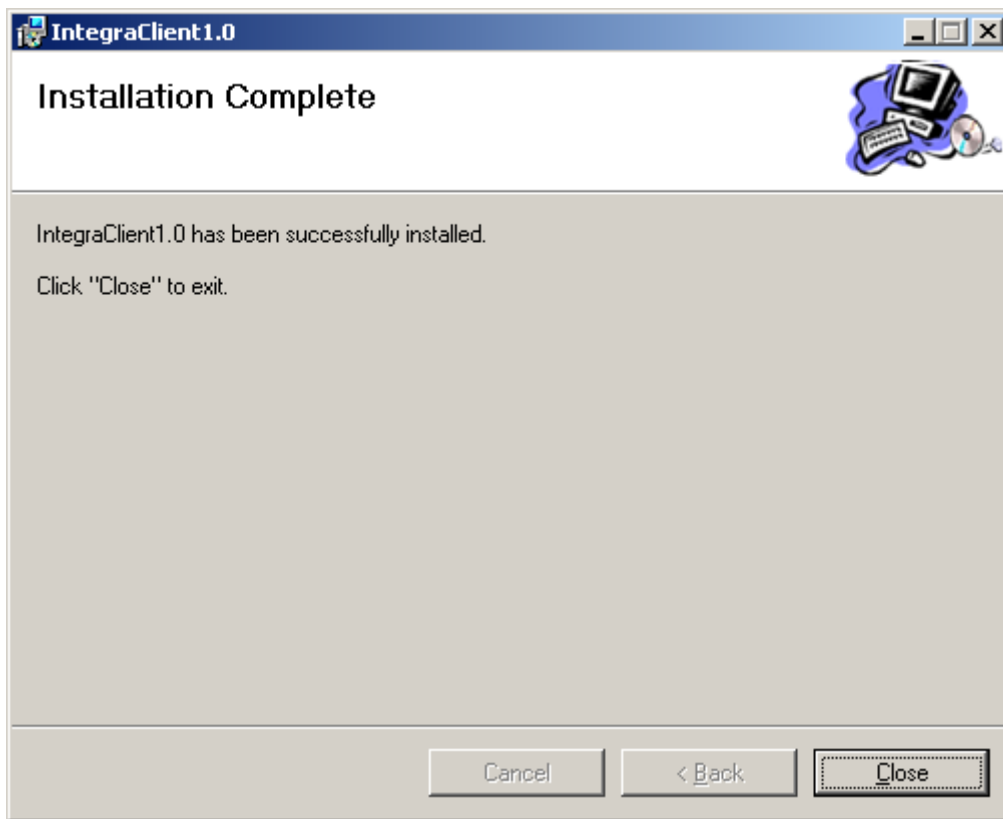
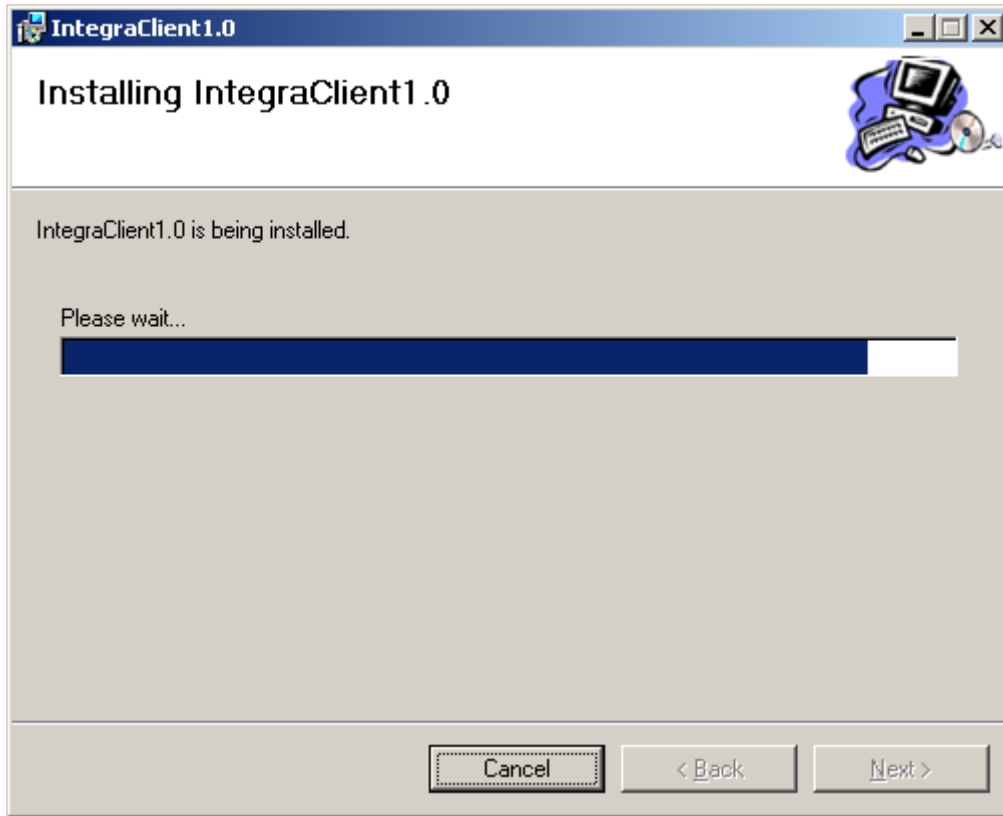
“Virtual Directory” is the name of the website you are creating

Set the installation location and click ‘Next’ to continue.



Click 'Next' to continue with installation.



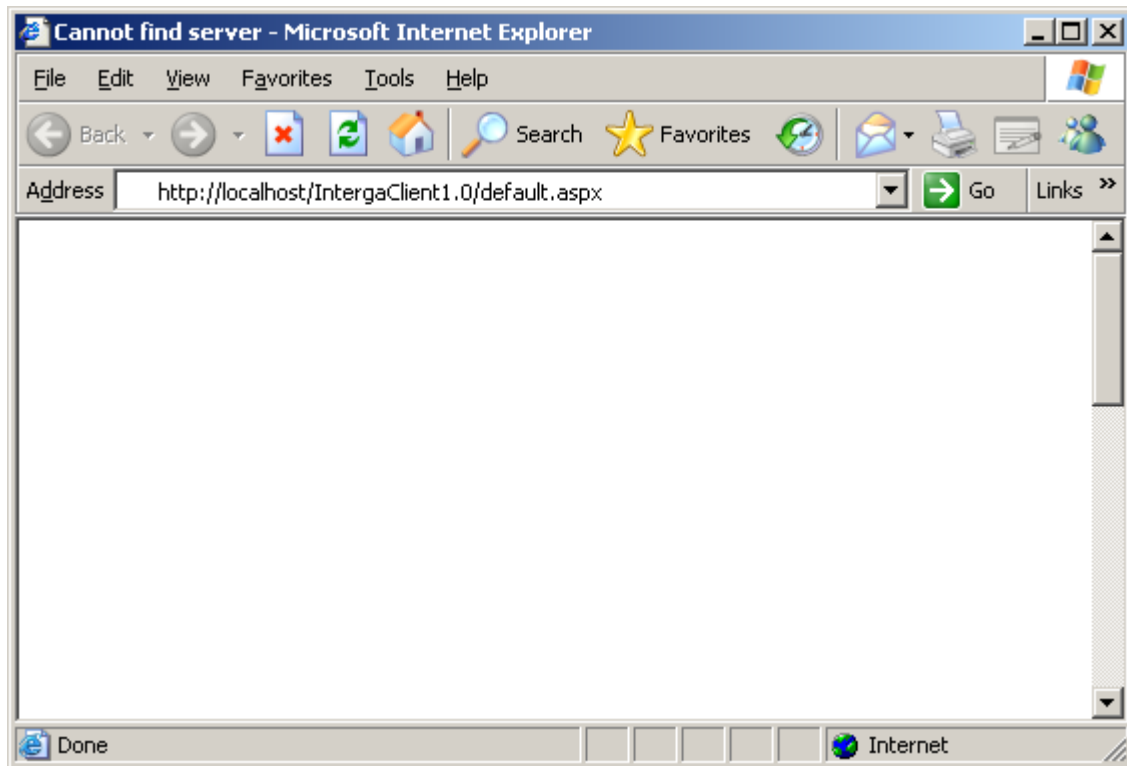


Click 'Close' to complete the installation.

### 3) Login via Web Client

Open Microsoft Internet Explorer and enter the address of the local server to login. Click 'Go'.

<http://localhost/IntegraClient1.0/default.aspx>

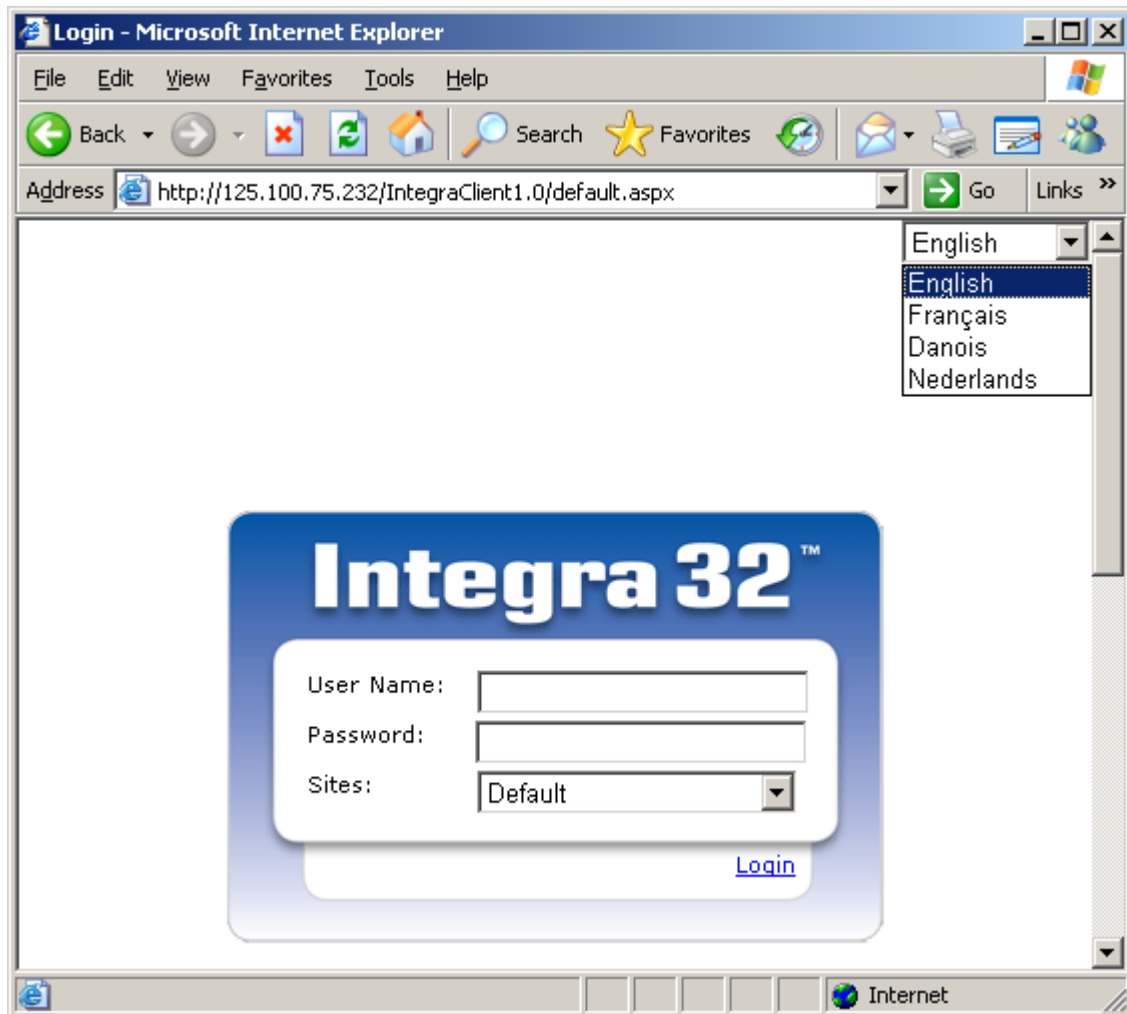


Substitute an IP address or the server machine's name for "localhost" to connect to a server across a network (including the Internet).

<http://IP/IntegraClient1.0/default.aspx>

<http://server machine's name/IntegraClient1.0/default.aspx>

For local testing you can use "localhost" or 127.0.0.1



Select a language for the user to operate with (the default is English). Enter the user's name and password, and then click 'Login'.

#### 4) Important notes:

Verify that IIS web services and Integra Client and Server applications are not blocked by a firewall.