



Technical Bulletin

2 Automatic Road, Suite 108
Brampton, Ontario
Canada L6S 6K8

Tel: (905) 790-1515 Fax: (905) 790-3680
Email: support@rbh-access.com Web: www.rbh-access.com

Number: 27

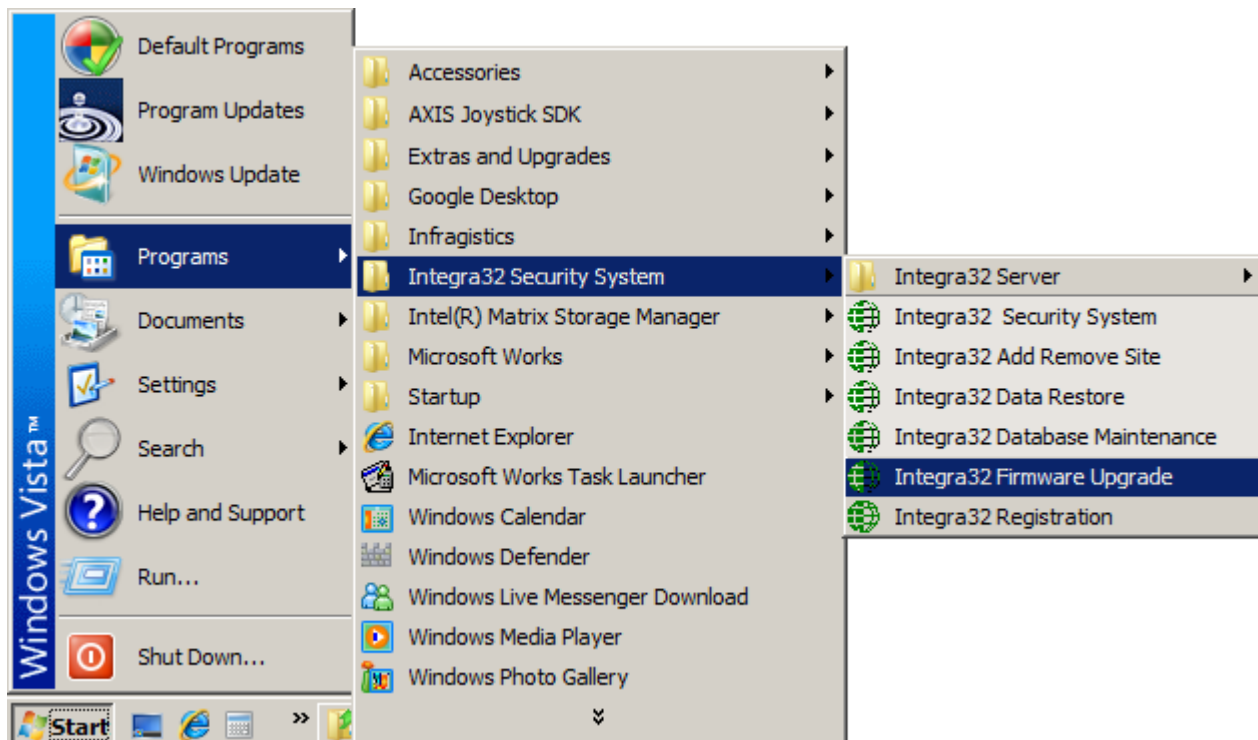
Firmware Upgrade for Integra32

Before Upgrading

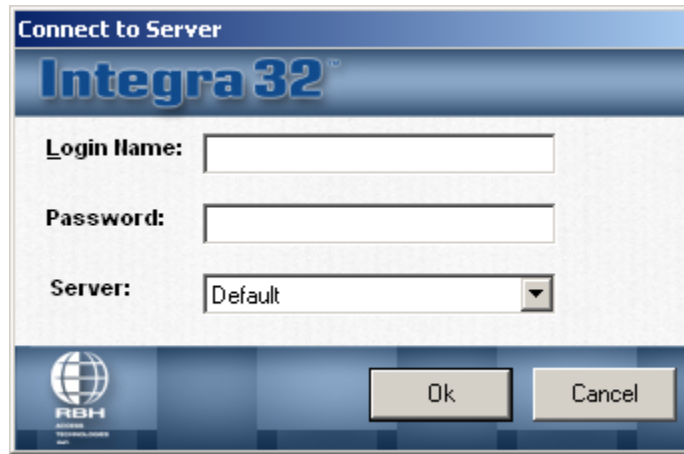
1. To upgrade the firmware the Integra software must be shut down.
2. Before starting the firmware upgrade be sure to know where the upgrade file (*.rbh) is located.
3. Although upgrading will not affect the panel's memory, it is recommended that you download all files to the panel after upgrading to ensure that any new features are properly installed.

Upgrading

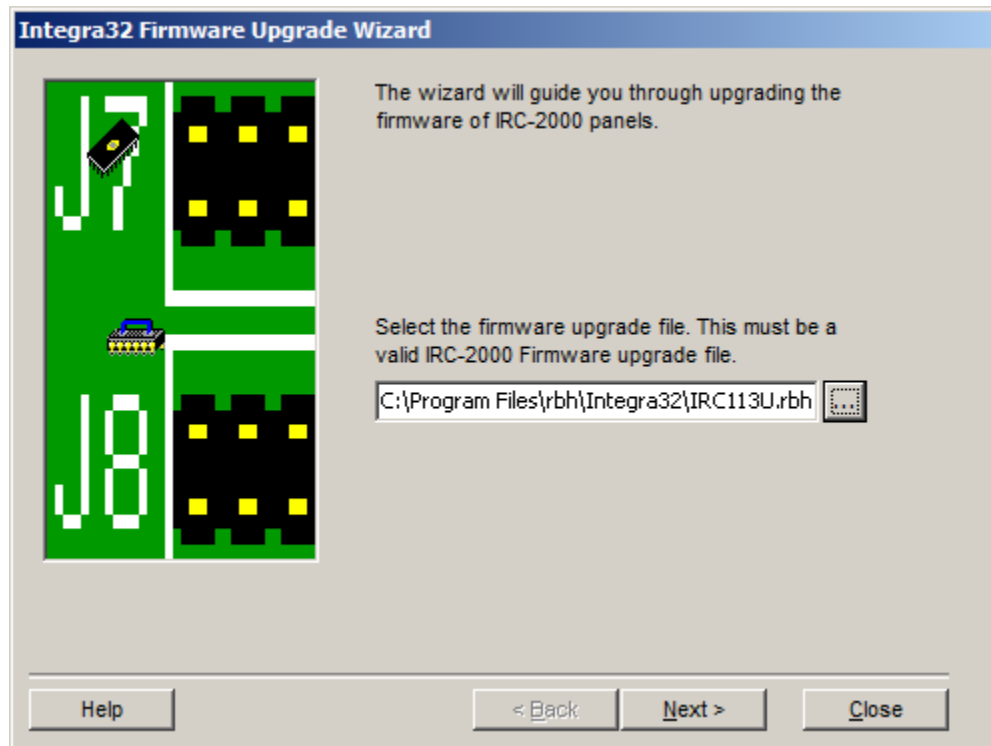
Run Integra32 Firmware Upgrade from the menu selection under Start – Programs – Integra32 Security System.



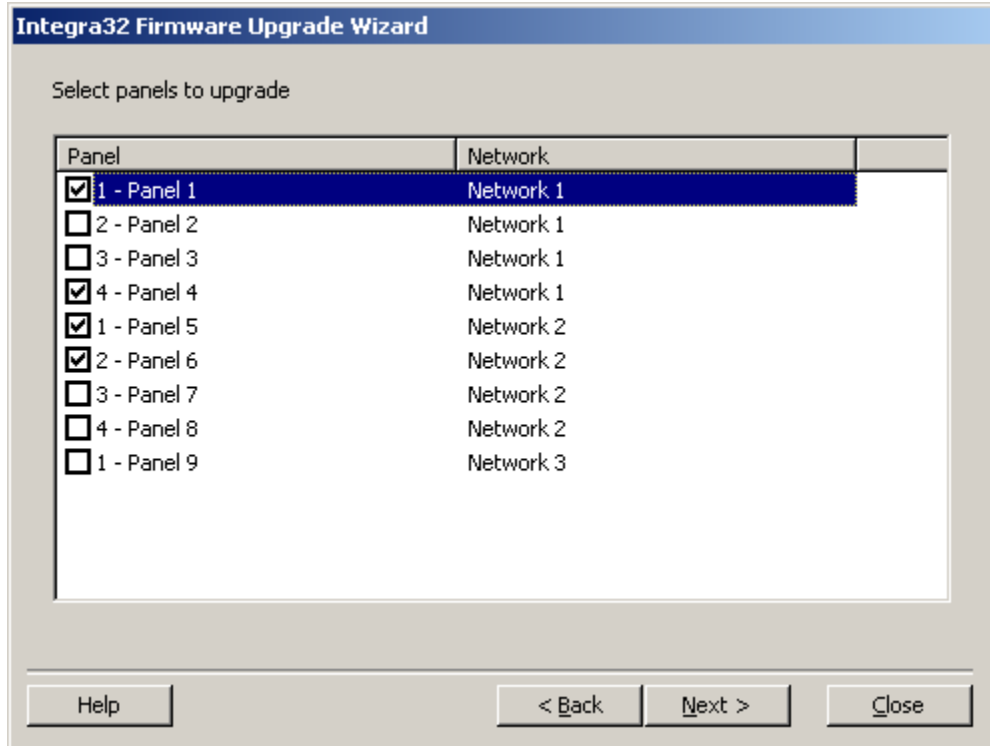
You will need to log onto the server



After logging in the Upgrade Wizard will come up. Browse and select the upgrade file (*IRC*u.rbh*). The upgrade file's path will be shown in the box next to the browse button.

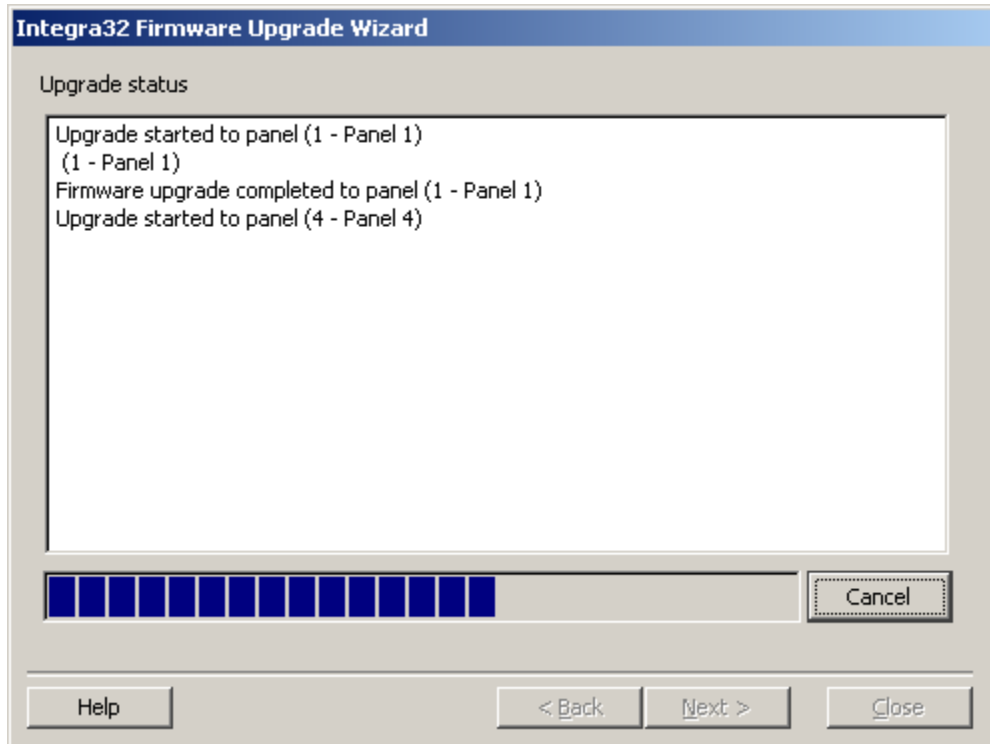


Click 'Next' after the appropriate file has been selected.

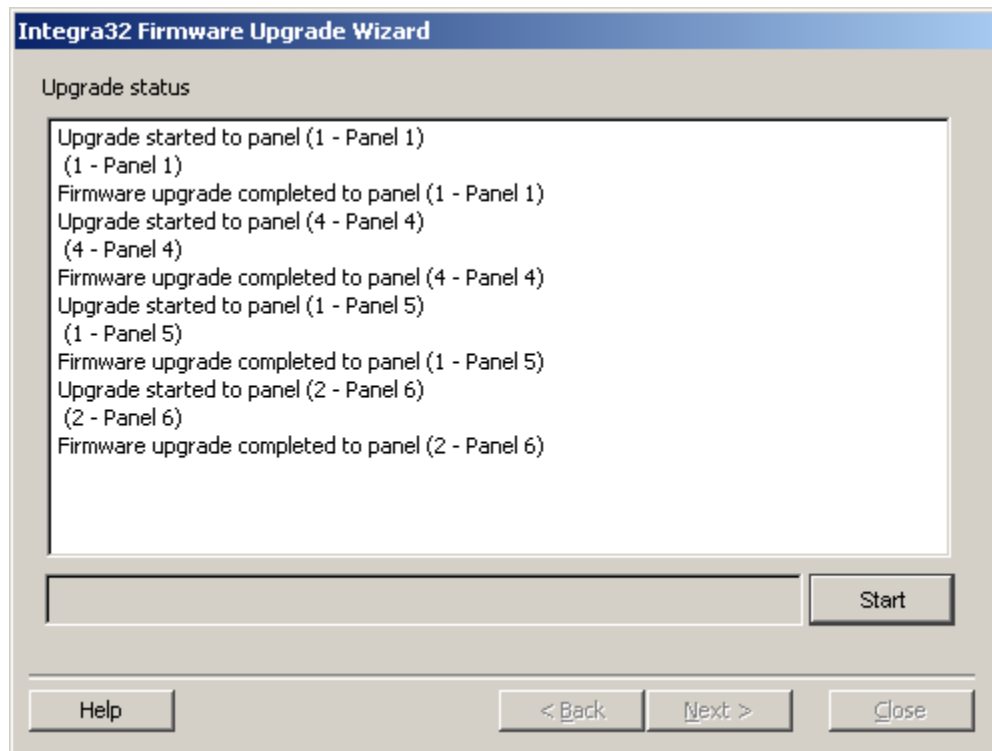


Next select which panel(s) should be downloaded to. Then click 'Next'. You don't have to select all the panels at this time. After upgrading you can come back to this screen.

Clicking 'Start' will begin the download.



A progress bar and messages will keep you informed during the proceedings.



There will be a 'completed' message after each panel download. You can go back to select other panels or close if you are finished downloading.