



Technical Bulletin

2 Automatic Road, Suite 108
Brampton, Ontario
Canada L6S 6K8

Number: 95 Installing Integra32™ V5.1.5R5.0

Contents

1. Pre-Installation Considerations2

 1.1. Computer Requirements2

 Server2

 Client2

2. Installation.....3

 2.1. Server3

 2.1.1 Sharing & Security 11

 2.2. Client 15

 2.3. Communications Modules 18

 2.4. Software Updates 19

 2.5. Manuals20

 2.6. Content of this CD.....21

3. Uninstall.....22

Before You Begin

This document describes the process required to install Integra32™ V5.1.5R5.0 software on your computer.

Before you run the installation please read the [*Pre-Installation Considerations*](#) for any additional information that may affect your installation.

1. Pre-Installation Considerations

1.1. Computer Requirements

Before you install Integra32™ V5.1.5R5.0 make sure that your computer's configuration meets the following requirements:

Server

Requirement	Description
<i>Operating system</i> ¹	Windows 8.1, Windows 10, Windows Server 2012/2012R2, Windows Server 2016 and Windows Server 2019
<i>Microprocessor (CPU)</i>	Intel Core i5 and equivalent
<i>Memory</i>	4GB (minimum), 8GB (recommended)
<i>Hard disk space</i>	2Gb (Installation), 20Gb free space (to run) 100GB if running RBHView as well

Client

Requirement	Description
<i>Operating system</i> ¹	Windows 8.1, Windows 10, Windows Server 2012/2012R2, Windows Server 2016 and Windows Server 2019
<i>Microprocessor (CPU)</i>	Intel Core i5 and equivalent
<i>Memory</i>	2GB (minimum), 4GB (recommended)
<i>Hard disk space</i>	1GB(Installation)

¹ No Home Editions are supported.

- ✓ The user installing the Integra32™ system must have Administrator rights to the Operating System.
- ✓ System performance will be affected by the microprocessor speed. Higher speeds will enhance the performance of the system. Systems that utilize functions such as global antipassback or global links, as well as systems that use features with a lot of graphic content (such as displaying cardholder picture) should have higher microprocessor speeds to insure that the system doesn't bog down. The more features being used the higher microprocessor speeds will benefit the system.

2. Installation

Insert the Integra32™ Installation CD-ROM into your CD-ROM drive. Windows should run the CD-ROM automatically, if not browse the CD and double click *Integra32_Startup.exe*.

2.1. Server

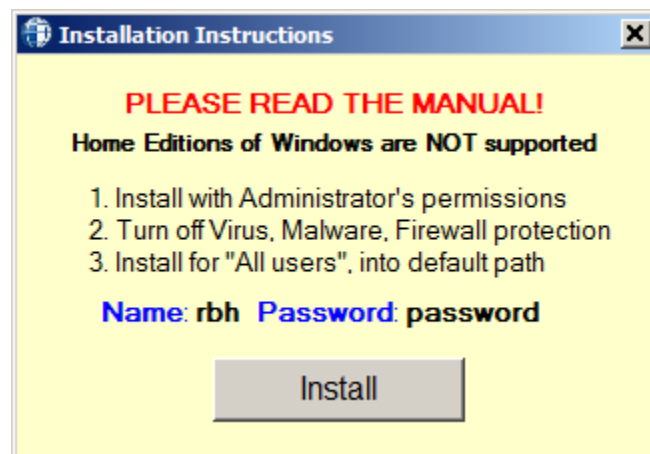


Before you install Integra32™ software, make sure that your Anti-Virus/Anti-Spyware software is temporary disabled.

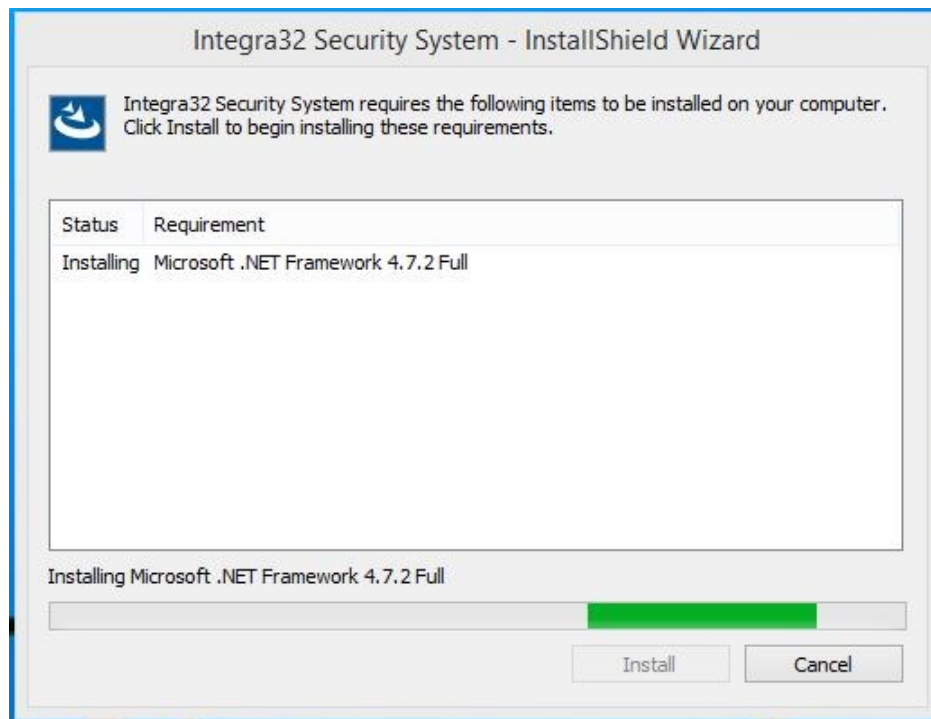


Read through the instructions at each step before proceeding with the installation.

Click on **Install Server** to install the Integra32™ Security System Server.

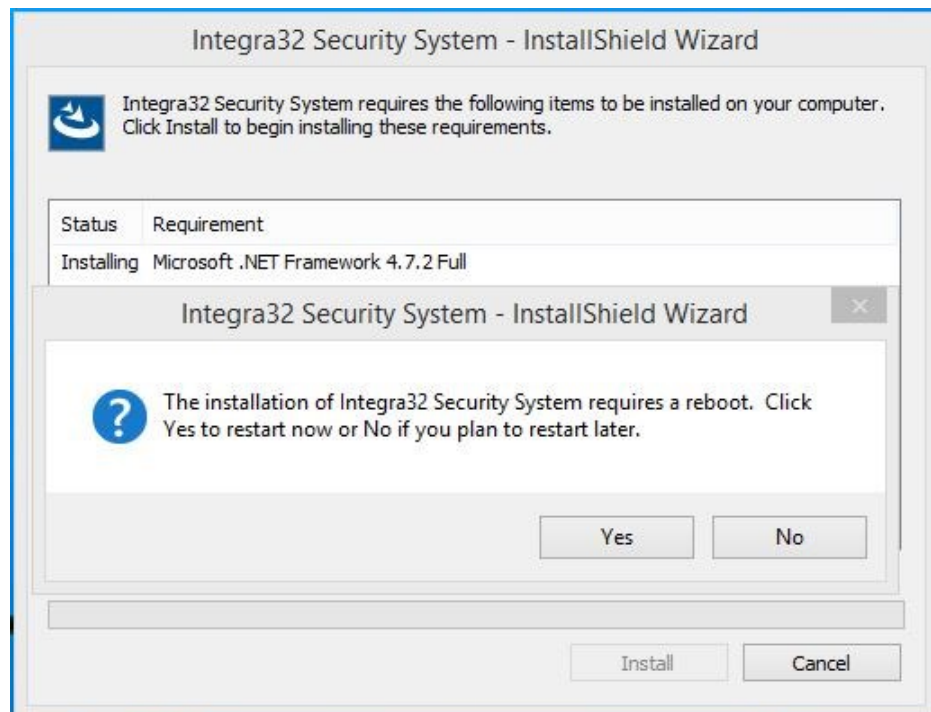


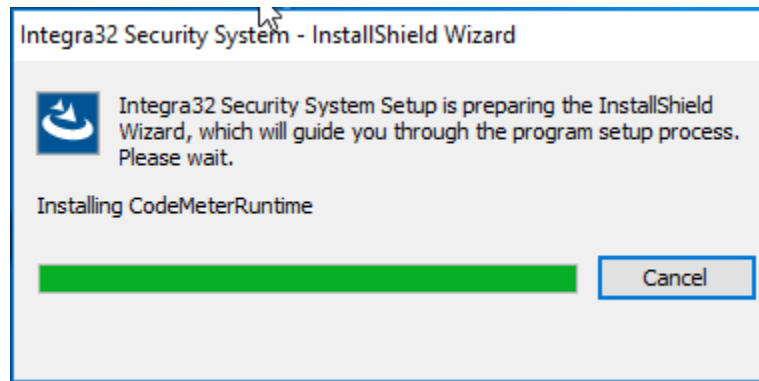
Follow the instructions on the install Wizard.



Integra Server installation starts with installation of .Net Framework 4.7.2, if it's already not part of operating system of the machine.

A restart of the machine is required after installation of .Net Framework 4.7.2. The message for restart will show up in installation. If not, please reboot the machine before continuing rest of the installation.

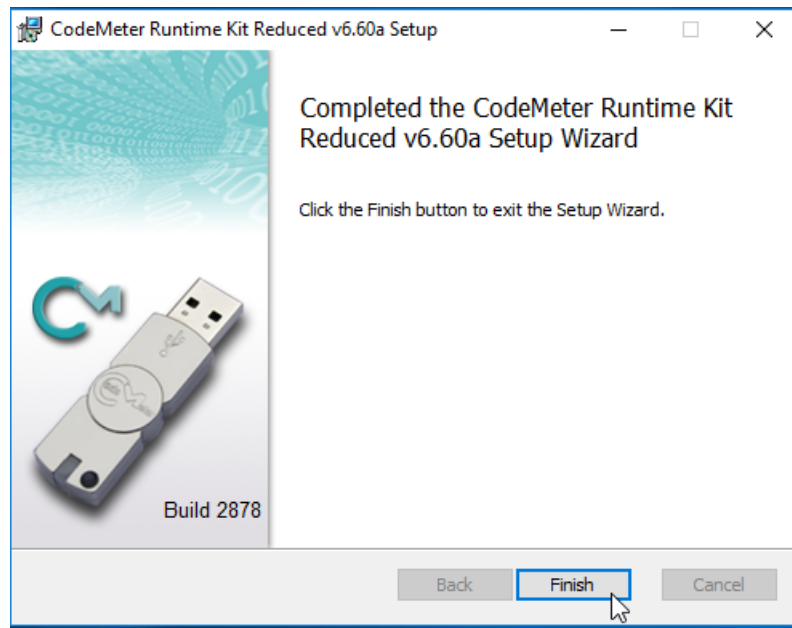




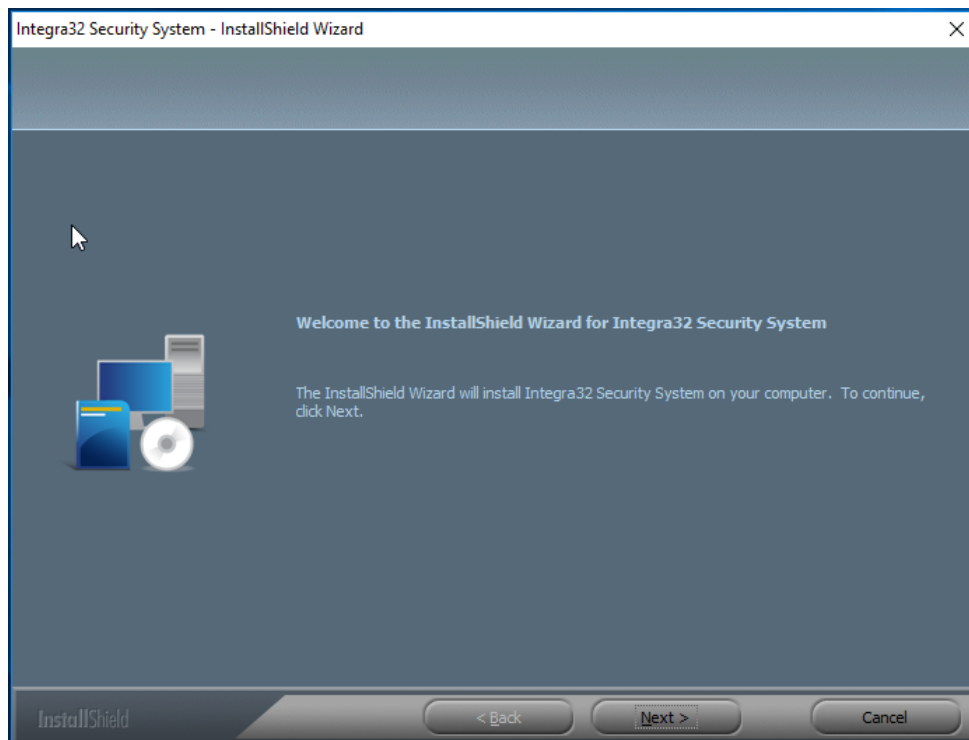
After restart, it starts back with the installation of code meter, which is a prerequisite for *Integra32™ Licensing Activation*.



Follow the On screens' prompts to install *CodeMeter Runtime* Kit.



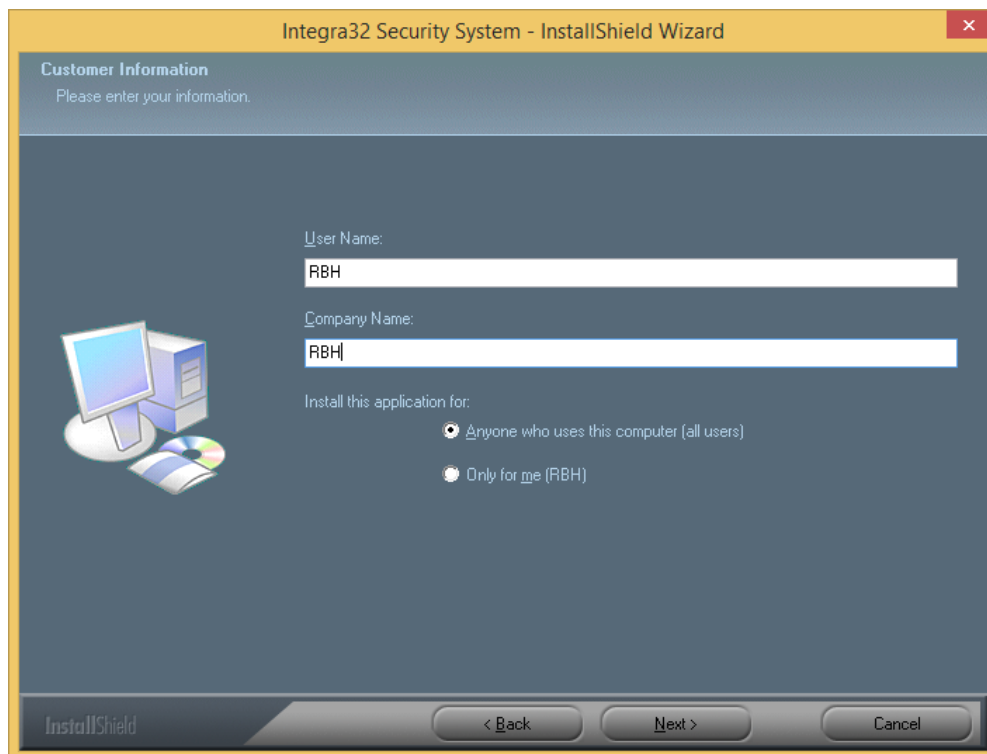
Clicking on *Finish* button will continue with rest of the *Integra32™* installation.



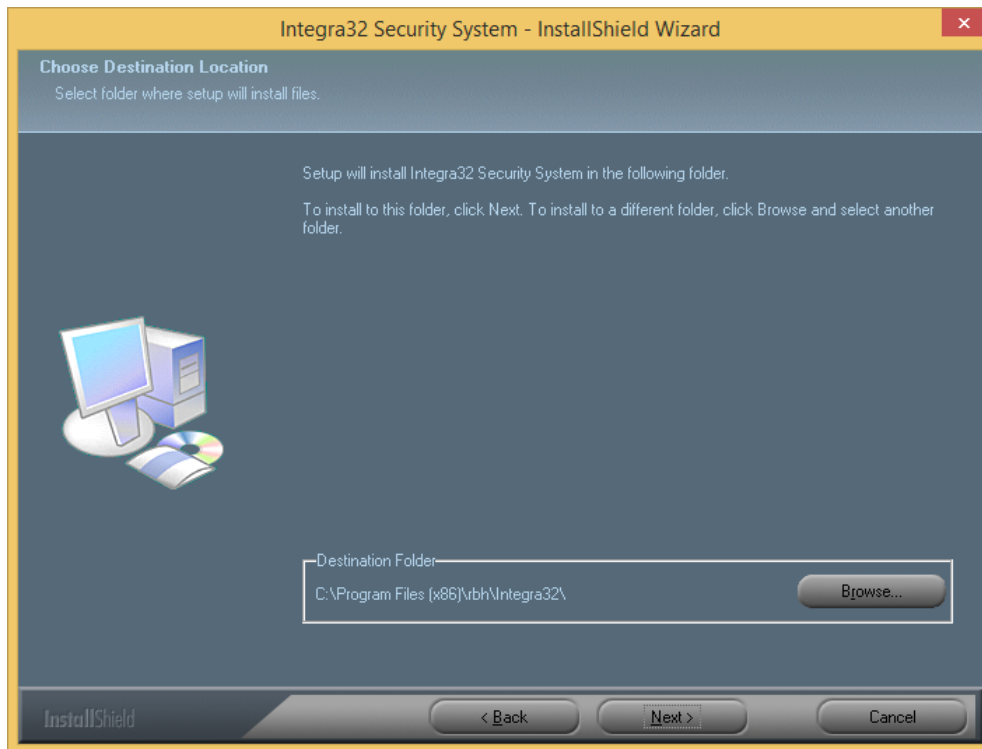
Click *Next*.



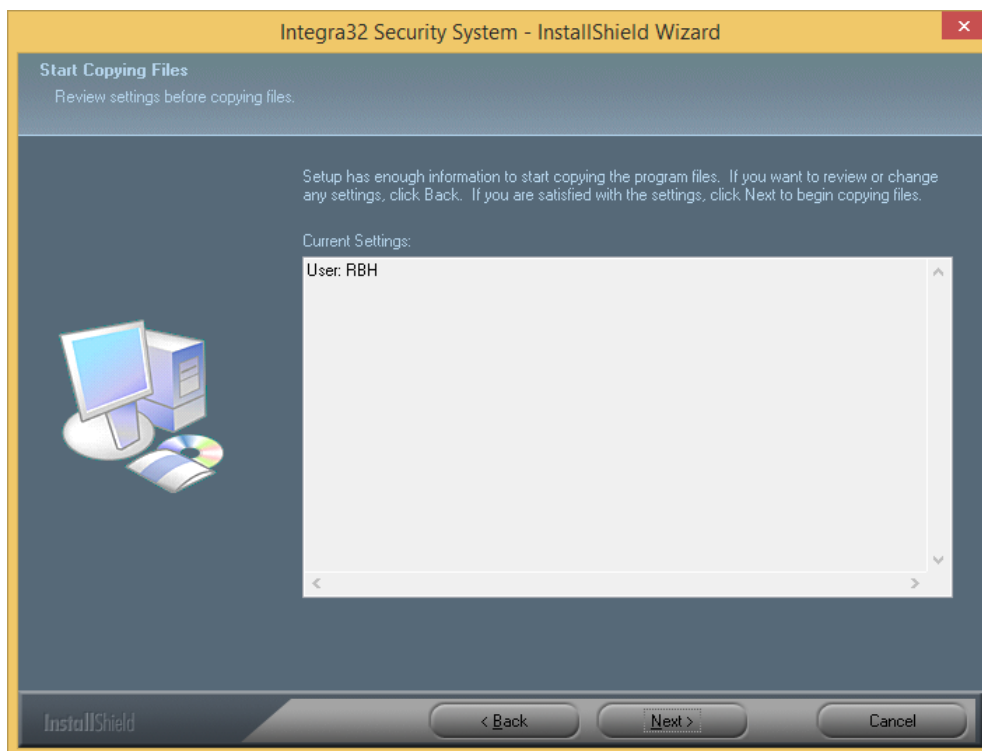
Accept the license Agreement.



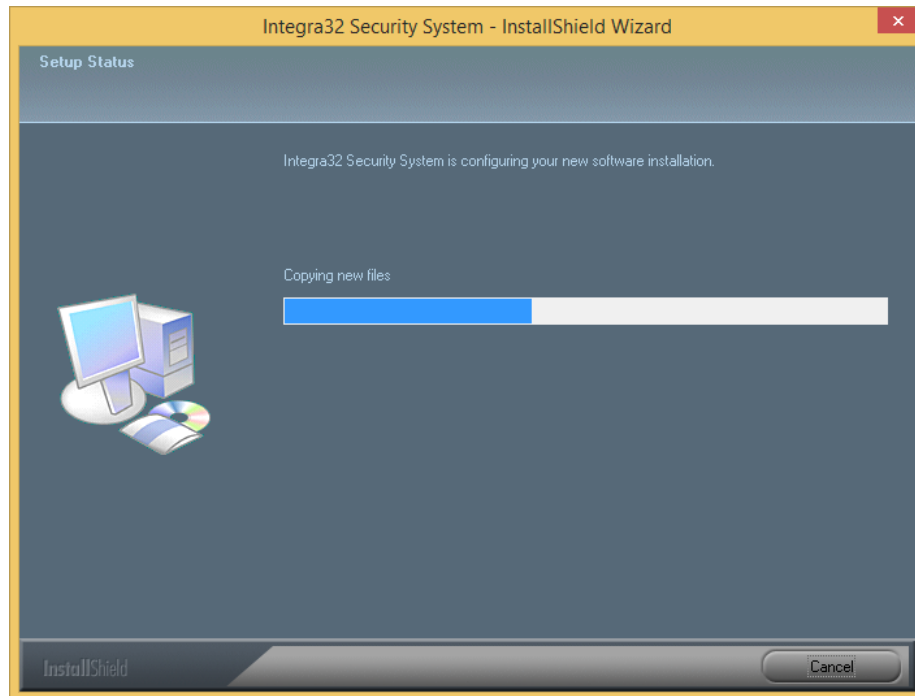
Click *Next* to continue.



In **32bit Windows Operating systems** the *Destination Folder* will be: C:\Program Files\rbh\Integra32\.



Keep clicking *Next* on the installation screens until the installation is finished.



Click on *Finish* to complete installation.

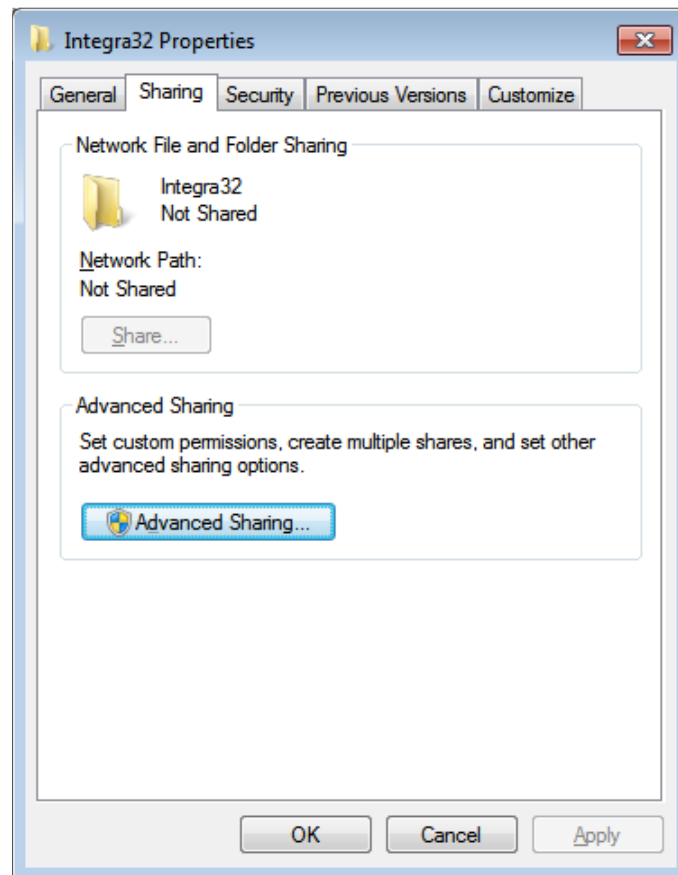


After installing the software, be sure to install the latest service pack.

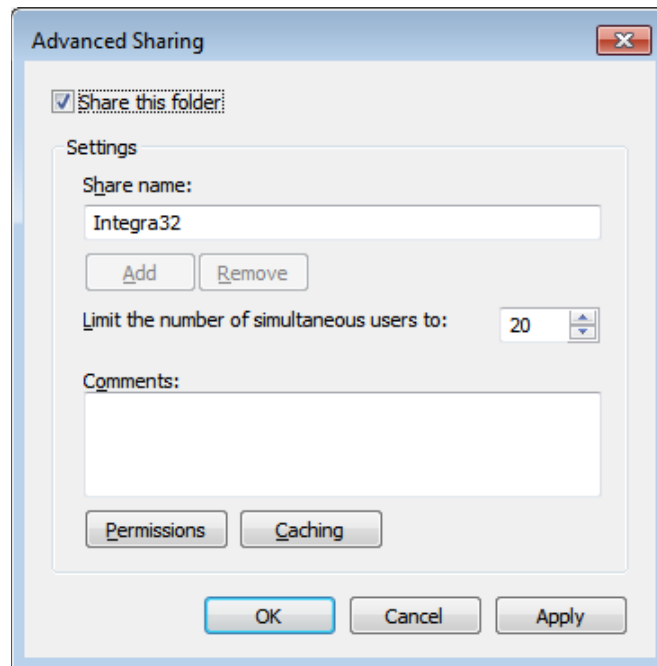
2.1.1 Sharing & Security

Browse to the C:\Program Files\rbh\Integra32 folder [in 64-bit OS, the path is: C:\Program Files (x86)\rbh\Integra32\] and right-mouse-click, choose *Properties*. Select the *Sharing* tab.

Click on the **Advanced Sharing** button.

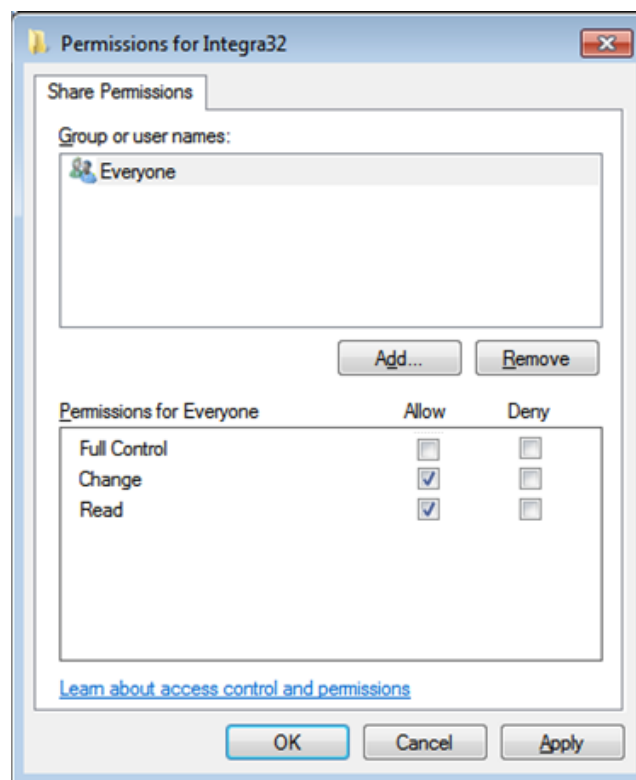


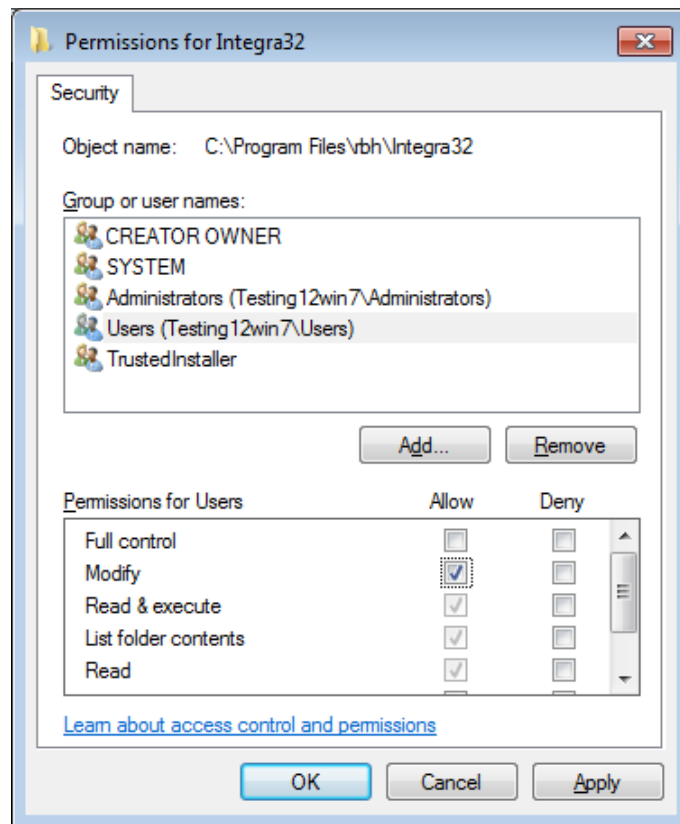
Click on the Permissions button.



2.1.1.1 General

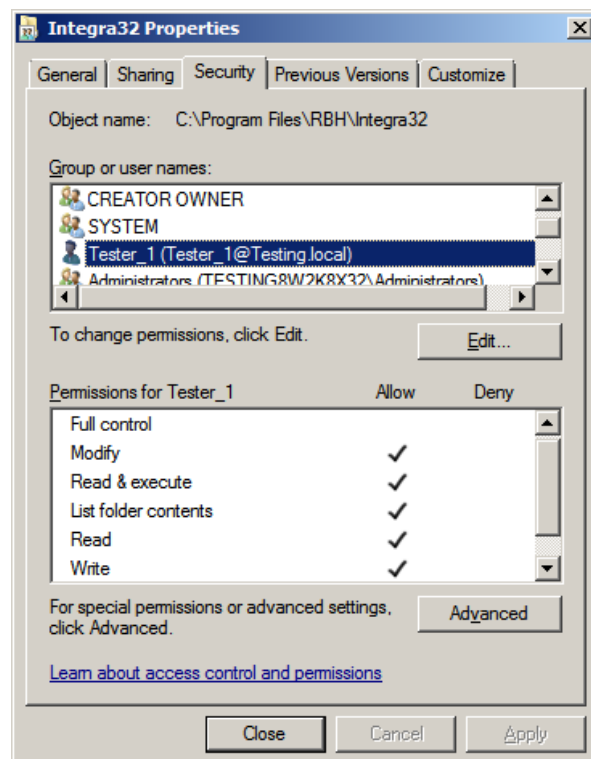
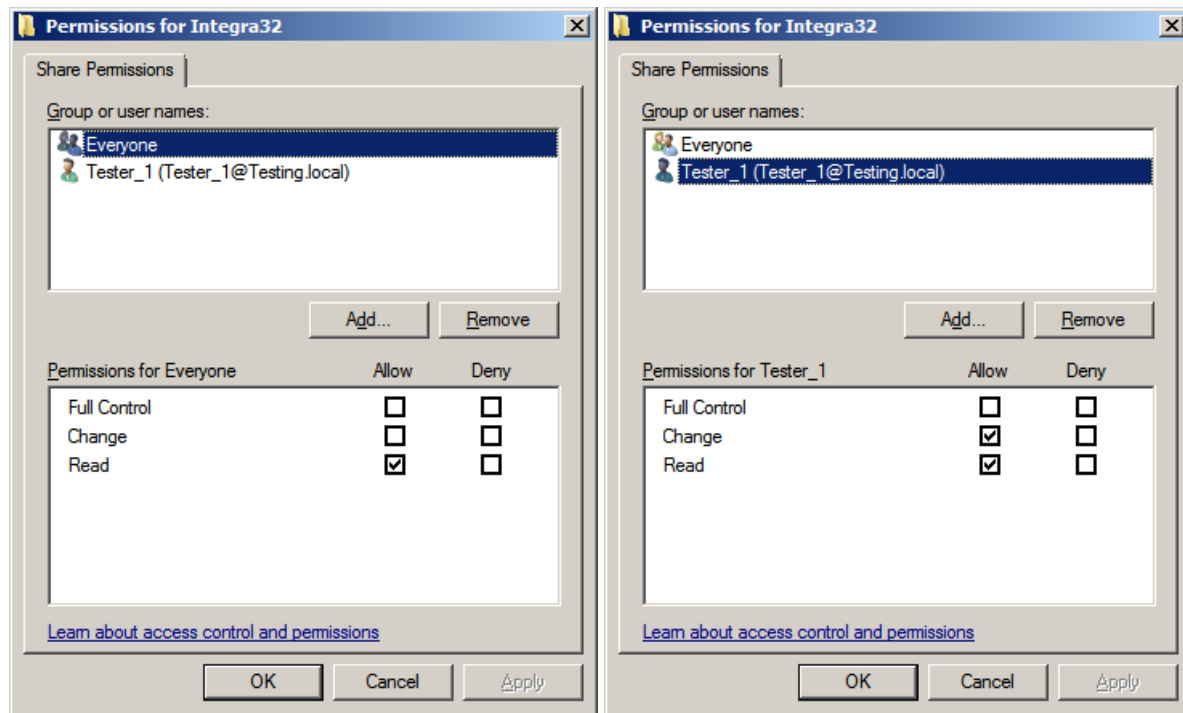
For General Security (*not High Security*) standalone Integra32™ Server configuration, the following settings could be applied in the *Sharing* and *Security* tabs.





2.1.1.2 Specific User

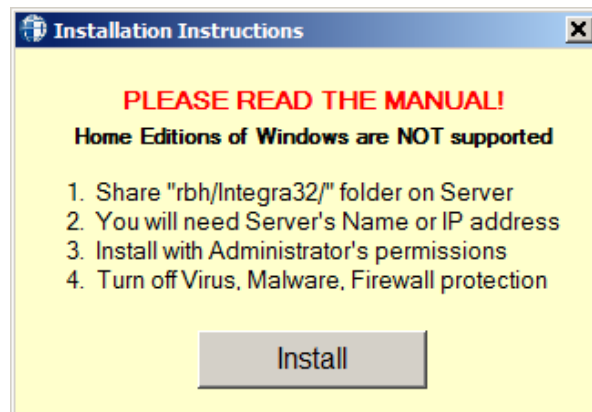
To set *secure access* to Integra32 databases on the network, with limited access only to specific users, (as shown for the *Tester_1* user in this example) the following configuration in the *Sharing* and *Security* tabs is recommended.



Don't forget to check and set your Windows Firewall properly (or any third party firewall software) on your computer where Integra32™ Server is installed. Windows Firewall is taken care in the installation itself.

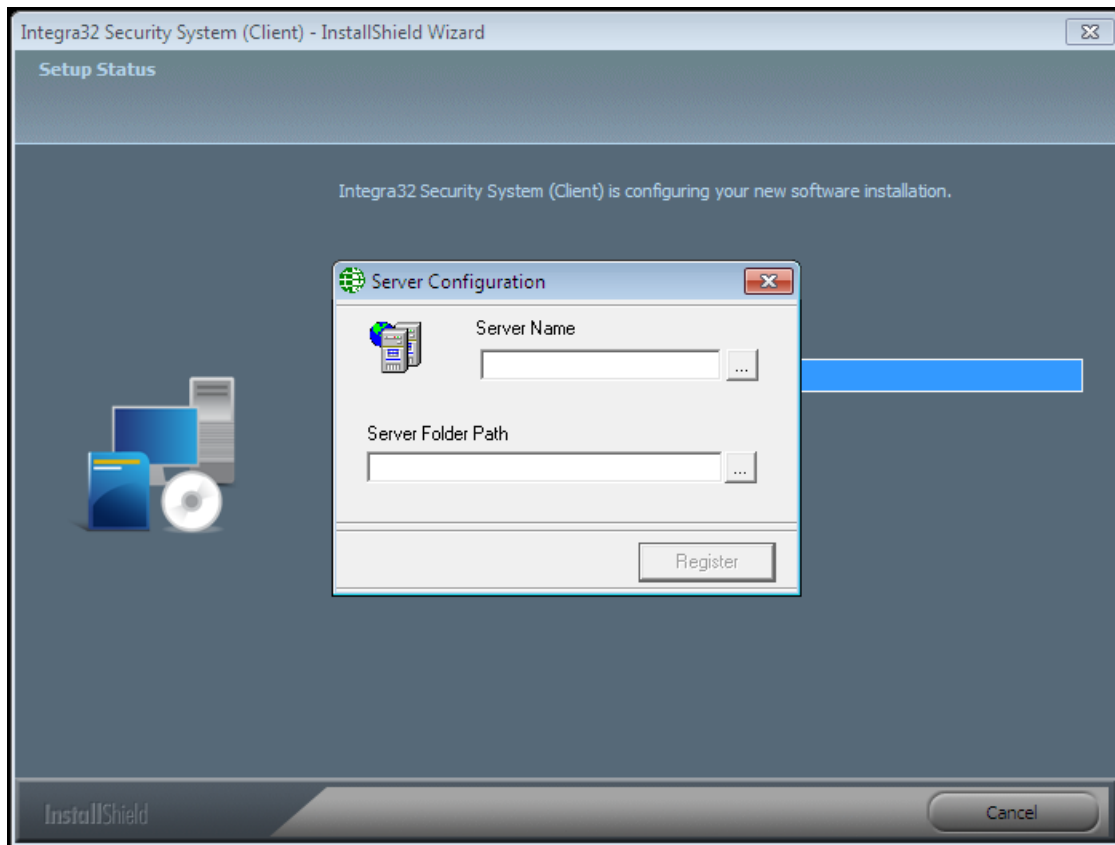
2.2. Client

Click on **Install Client** to install a remote client for the Integra32™ Security System.



Follow the On screens' prompts to install Integra32™ Client.

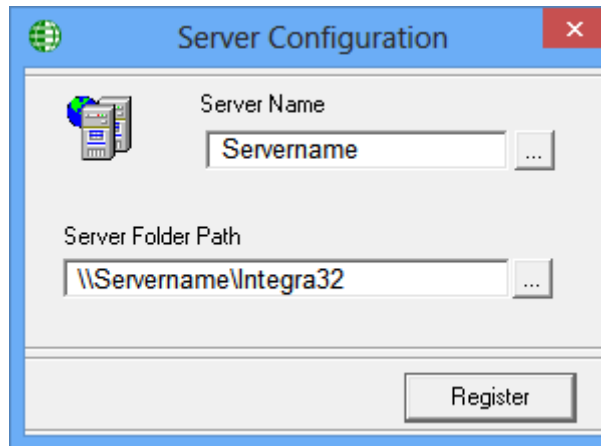
At the Server Configuration screen:



Make sure to put in the right server name and path in the server configuration window. The path is the Integra 32 folder on the server machine, which should be shared as shown above, and click on *Register* to finish Integra32 Client installation



In Workgroup environments and with different Windows' users logging on to different machines, It may be necessary to add the Windows user account on the client PCs to the Server machine with the same user name and password. This way when the client connects to the share, the account will be authenticated properly. Mapped drives may cause issues.



After installing the software, be sure to install the latest service pack.

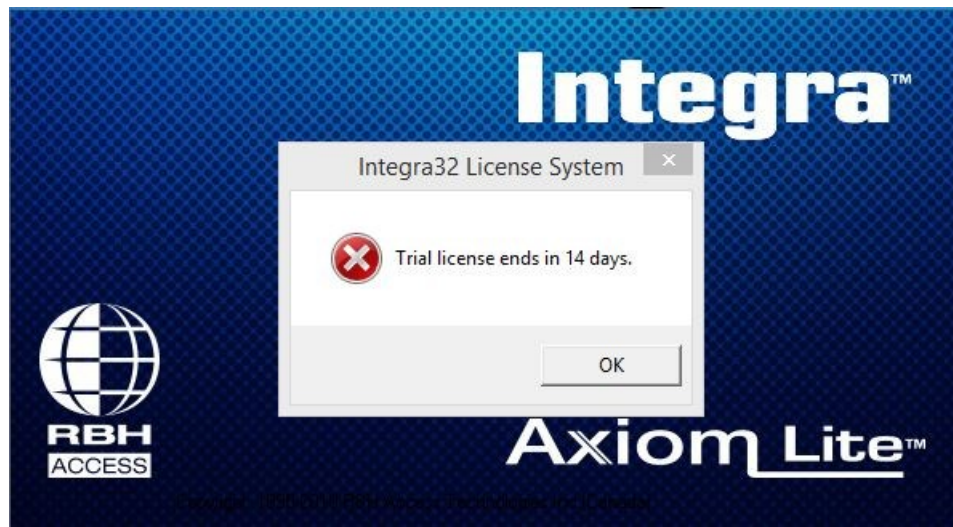
Remote clients need to be the same software version as the server they connect to.

Integra32™ system software comes with 14 days trial license, after which the system will not run unless user registers with RBH and activates the License. Registration and Activation can be done any time during the trial period as well. Follow the instructions in *Integra32 Registration Activation.pdf* to register and activate.

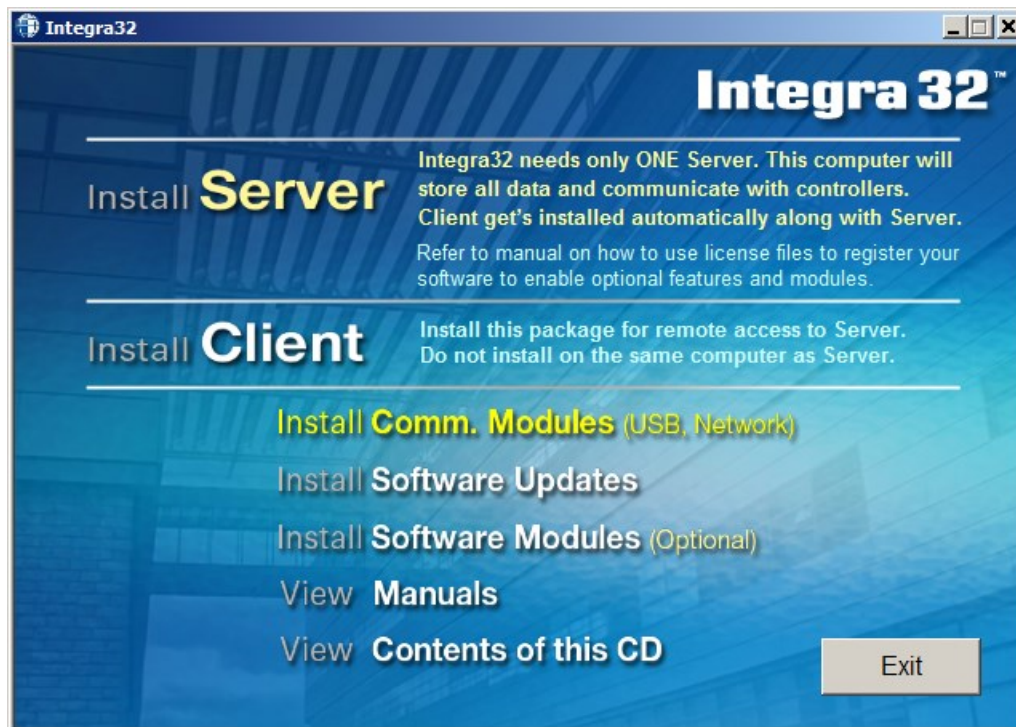
Log on to the Integra32™ security system by using the default user ID and password.



Clicking OK will bring up the screen for 14 days Trial license



2.3. Communications Modules

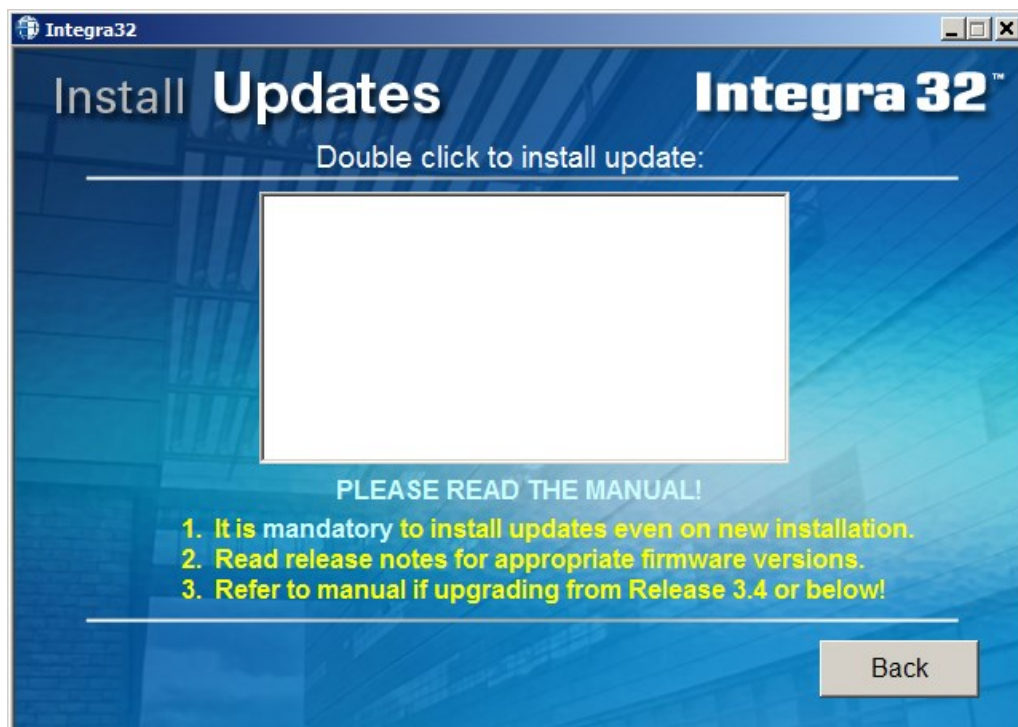


This selection will open the *Communications Module* folder on the CD. Drivers, documents, and utilities for the indicated devices can be found here.

2.4. Software Updates



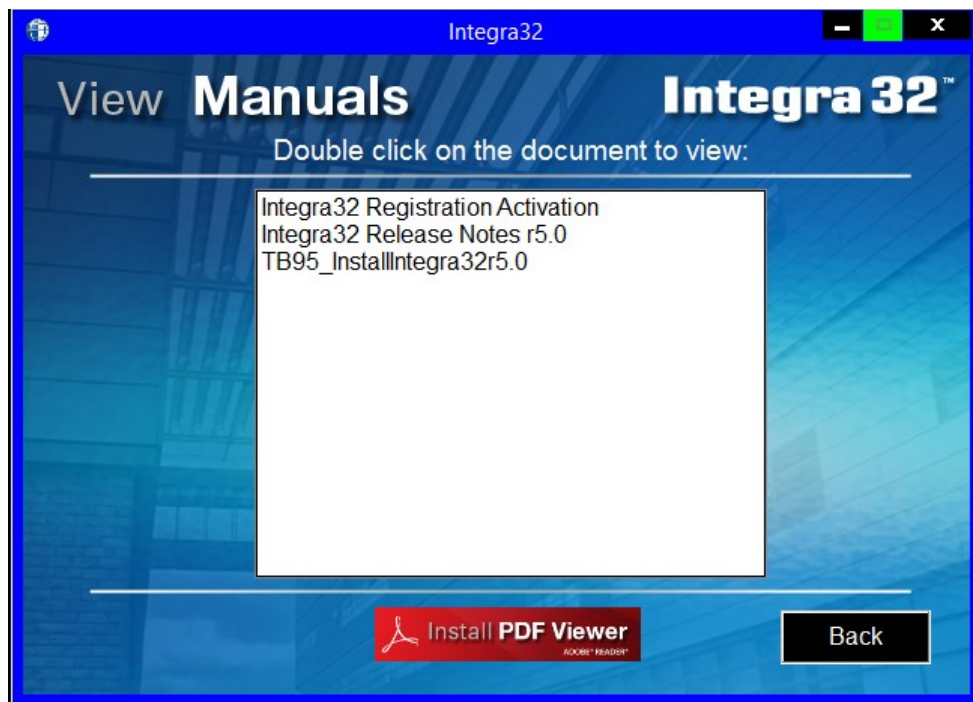
Select **Install Software Updates** and then double click the appropriate upgrade.



2.5. Manuals



View Manuals will provide a list of available documents. Double click a document to open it. A **PDF Viewer** is included for viewing the documents for those who don't already have one.



2.6. Content of this CD



View Content of this CD will open a browse window for the CD.

3. Uninstall

If you try to install the server where it already exists you will get the following screen. To uninstall the system select Remove and click Next.



Integra32™ can also be removed from the operating system's add/remove program screen.