

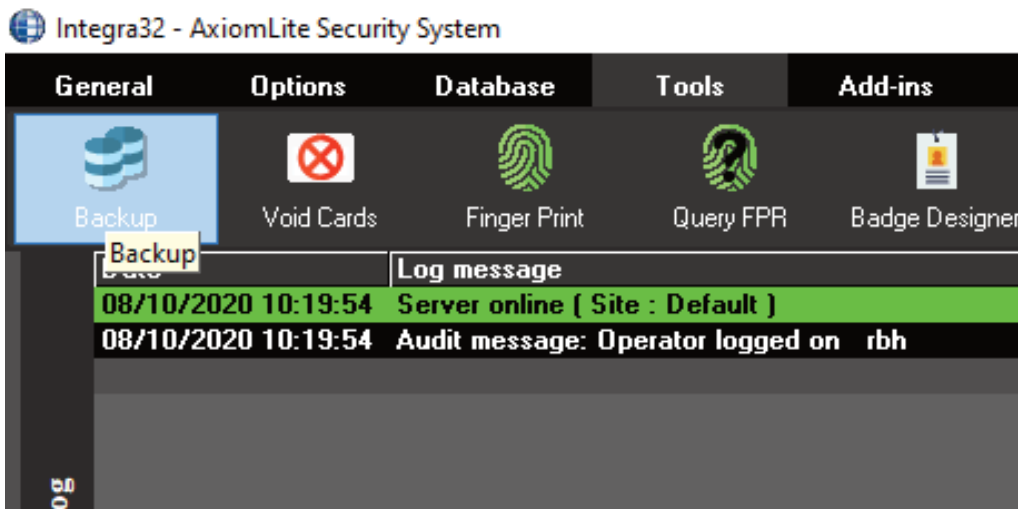
Axiom Lite™



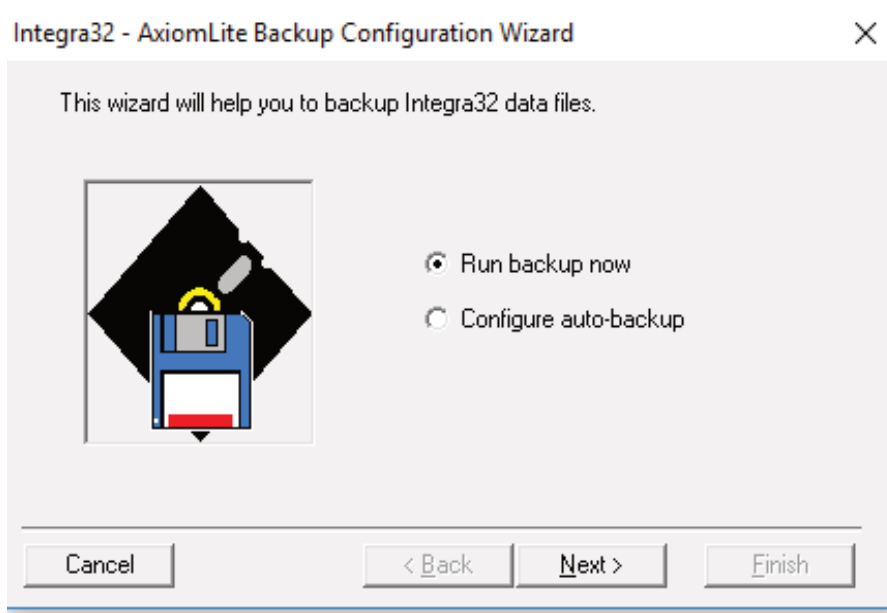
Technical Guide

Creating a backup on Integra32

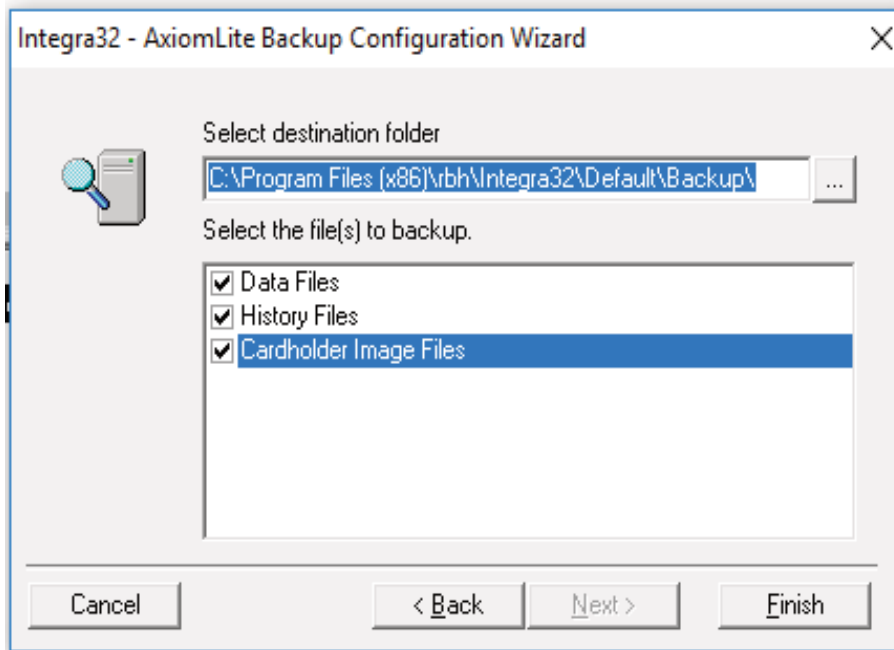
Go into the Integra Software and select **Tools** at the top of the page, then click **Backup**.



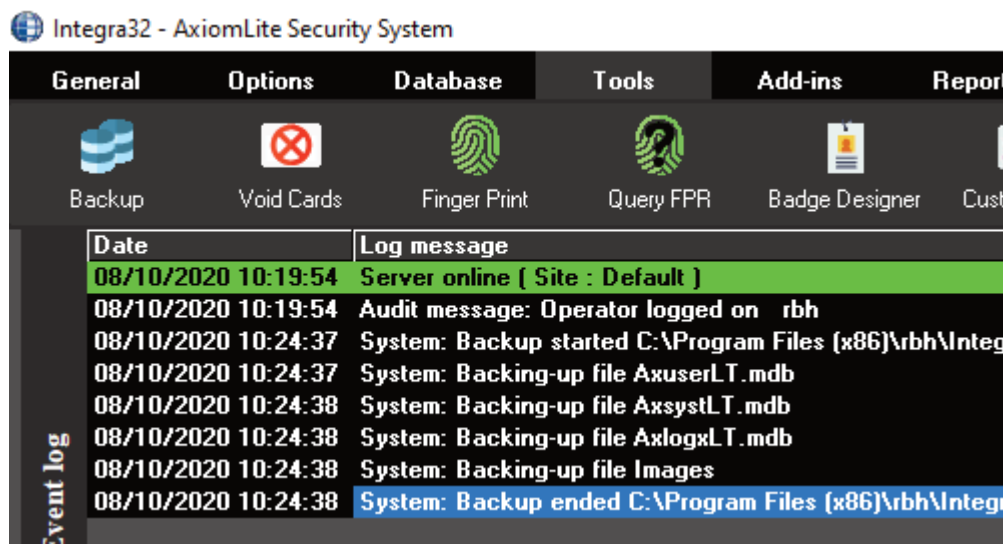
Select **Run backup now** and click **Next**.



The **destination location** should look like the default one below. If you want to backup everything, tick all the files. (You can backup to a network location or memory stick as long as you have admin privileges).

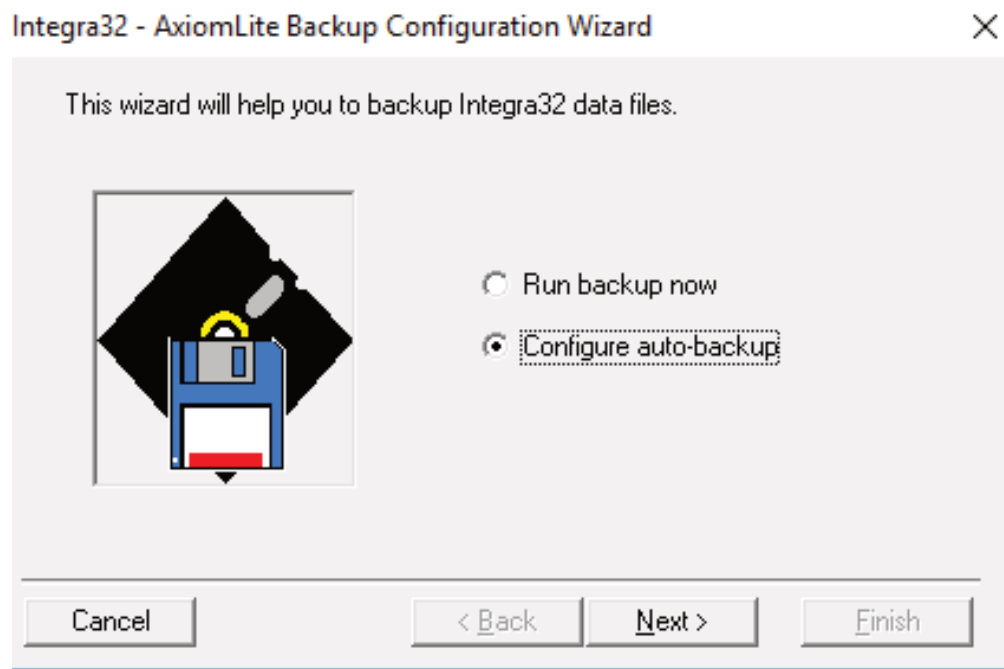


If you the backup is successful, the **Event log** should display the messages below.

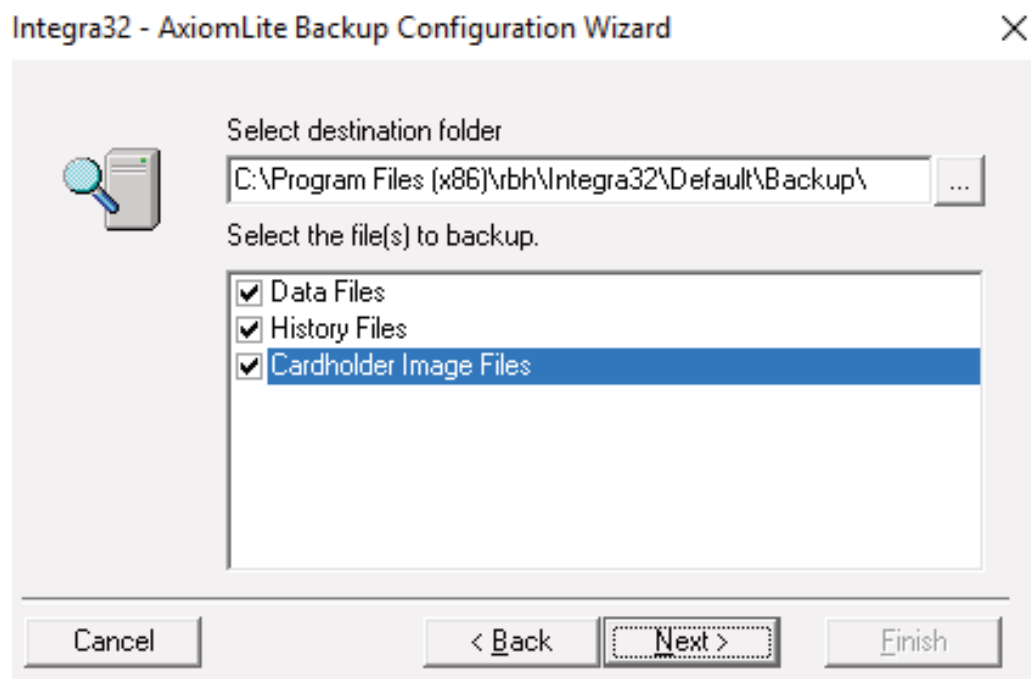


We also recommend setting up a scheduled backup, please see below.

Repeat step 1, but instead of **Run backup now**, select **Configure auto-backup** and click **Next**.



Leave the destination folder location as the one shown below and elect the files that you want to backup.



Here, you can select the time and days you want to backup your files. Below is an example of a backup scheduled for Monday, Tuesday, Wednesday and Thursday at 1am. Click **Finish** when completed.

