

INTERACTIVE GUARD TOUR

AX-PRO-GT AX-ENT-GT

In a small or a large facility there is no substitute for personal inspection of the access points and secured areas. To verify door's operation, presence of people in the area or various other issues that can be out of normal order a patrolling security officer is needed. To make sure that these inspections are performed on time and in proper order we are proud to present our "Guard Tour" management package for Professional and Enterprise editions of our AxiomV™ Security Management System.

Access Points can be arranged in a sequence to be visited by a security guard. This Guard Tour can be started manually or automatically on a schedule and will specify the times at which points on this tour must be visited. For example "Routine Tour" will start at 10 PM at the Security Office, guard must make it to the Main Door 10 minutes into the tour, Rear Door in 25, Loading Dock in 40 and so on. As with all things in real life there are reasonable delays, and our programmable Grace Periods were designed to account for them. However if a guard was late beyond reason or had arrived too early, possibly taking a shortcut deviating from prescribed route, an alarm will be displayed and recorded.



- Fully integrated with AxiomLinks™
- Uses existing readers at access points
- Start tours manually or by schedules
- Comprehensive monitoring & reporting
- Integrated with CCTV
- Real-time operation
- Integrated with CCTV
- Live progress display

Guard Tour Status Screen

Displays if the tour has started, and if so when, as well as which guard has reached which access points and when.

AxiomLinks™ Integration

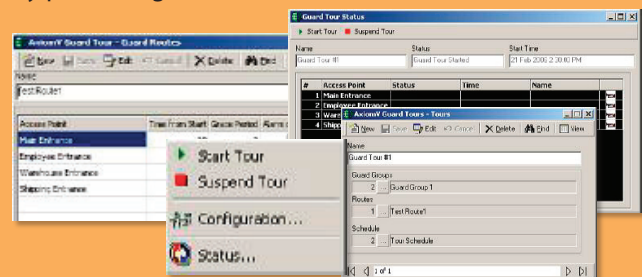
Various programmable automation sequences and commands can be automatically executed when the guard arrives a station early, late or on-time.

CCTV Integration

Live video from a camera associated with an access point can be displayed when a guard reaches it while tour is in progress. This allows for visual verification and recording.

Guard Groups

For added flexibility, multiple guards can be assigned to a Guard Group to conduct tours together or separately. Any guard belonging to this group can advance the tour by presenting their ID.



*Specifications are subject to change without notice.

AxiomV



Head Office

RBH Access Technologies, Inc.

2 Automatic Drive, Suite 108
Brampton, ON Canada
L6S 6K8

Tel. +1-905-790-1515
Fax. +1-905-790-3680
info@rbh-access.com

www.rbh-access.com

Europe

RBH Security Group Ltd.

F3 Enterprise Way, Vale Business Park
Evesham, Worcestershire UK
WR11 1GS

Tel. +44(0)-1386-42810
Fax. +44(0)-1386-42811
sales.uk@rbh-access.com

www.rbhsecuritygroup.com

USA

RBH USA, Inc.

60 Whitney Rd., Suite 14
Mahwah, NJ 07430

Tel. 877-251-3550
Fax. 201-891-3420
info@rbhusa.com

www.rbh-access.com